

Tampa 708 Elksize

Volume 2021 Issue 6—September 2020
 Official Publication of Tampa Elks Lodge #708, Founded 1902
 Published monthly at 3616 W Gandy Blvd, Tampa FL 33611
 Office: 813-831-4280— Lounge: 813-839-8928

**"FRIENDS OF 708"
 1ST SUNDAY
 BREAKFAST RETURNS!**
SEPT. 6TH – 9AM TO 12PM



Oktoberfest
 Oct. 3rd—Details Inside

**Coming in
 October!**



**A Nightmare Before Christmas 2020
 Halloween Extravaganza**
 Tampa Elks Lodge 708
 Saturday, October 31, 2020
 6:30 PM



Come join us for a frighteningly good time!
 A Buffet of Delicious Delicacies
 Spooktacular Shocktails and Specialty Drinks
 Halloween Themed Food Contest

Trick or Treat Grab—Will you be lucky or not?
 Games and Prizes
 Costume Contest
 Haunted Maze—Enter if you dare!

**Bucs & Rays on
 BIG SCREEN TV Every Game!**



FLOE Conference
 September 24th-26th

**SAVE THE DATE!
 FLOE CONFERENCE
 September 24th-26th**

Enjoy the experience of reuniting
 with old friends, making new
 ones, and sharing ideas....
 AND....
 Helping us Support our
 Charities!

**R&S RECORDS PRESENTS
 ACT III
 Friday Night
 MOTOWN**
 Lido Beach Resort,
 Sarasota, Florida
 Friday, September 25th

Cocktails 5:00 p.m.
 Dinner 6:15 p.m.
 Music & Dancing 7:00 p.m.

Dress is "Business Casual"
 or...."Dress the era of
 MOTOWN!"





LODGE OFFICERS:

EXALTED RULER - Chris Miles
LEADING KNIGHT - Camden Lynn
LOYAL KNIGHT - Paul DeLand
LECTURING KNIGHT - Shannon Wheatley
SECRETARY - Rick Schneider, PER
TREASURER - Laura Jones
ESQUIRE - George Hilficker
INNER GUARD— Bob Suhrheinrich
TILER— Jake Slater
CHAPLAIN - Melissa Bertoch
5 YEAR TRUSTEE - Bob Orcutt
4 YEAR TRUSTEE—Tommy Moore
3 YEAR TRUSTEE - Courtney Weil, PER
2 YEAR TRUSTEE—Shelagh Gombarcik, PER
1 YEAR TRUSTEE - Theresa Matthews, PDDGER
DISTRICT LEADER - Frank Palladini, PSP, PDDGER
LODGE ADVISORS - Steve Harmon, PDDGER
 Theresa L. Matthews - PDDGER, WCD

HOUSE COMMITTEE:

CHAIR—Shannon Wheatley
Members: Wendy Hall,
 Paul DeLand, Sue Moore,
 Jacquie LoCicero & Tommy Moore

LODGE COMMITTEES:

Hall Activities—Jacquie LoCicero
Auditing Committee—Chair, Melissa Bertoch,
 Bonnie Atwood, Robert Bordenaro
Elks National Foundation—Shelagh Gombarcik
Harry Anna Trust Fund—Taylor Taylor
Veteran Services—Patty Jankiewicz
Elksize Editor—Paul DeLand

EOTM

EOTM, Christina Sanchez: Christina helps out in various charitable capacities including the open arms ministry breakfast, but this year she's really shining and has even been noticed by the state organization. Christina, along with many others including her mom Courtney Weil, sister Caprianna Sanchez, and little brother Taylor Taylor helped to gather and package meals for members and those in need as well as school supplies for the children. Christina has also been working on a community refrigerator for those in need with the month, "take what you need, leave what can". She also helped package and deliver over 600 hygiene bags to the homeless to help keep them safe during the pandemic. I'm really proud of my niece



OOTM

OOTM, Melissa Bertoch: Melissa has again taken on the role of Lodge Chaplain and is always well prepared. In addition, she is one of the driving forces behind the monthly ethnic night dinner which she has hosted for quite some time and often comes up with things to do with members outside the Lodge like attending the German Festival or Christmas Light Show at the Trop. But she also has been able to get Elks involved in charitable works. This year she was able to get Elks involved in adopting a road (South Himes from Gandy to W. Bay). On top of it all Melissa is one of the most Cheerful people I know and loves to pass that on. Thank you Melissa.



SEPTEMBER

SUN	MON	TUE	WED	THU	FRI	SAT
		1 NYY 7:05	2 NYY 7:05	3	4 MIA 6:40	5 MIA 6:40
6 MIA 1:10	7 WSH 6:05	8 WSH 6:05	9	10 BOS 6:40	11 BOS 6:40	12 BOS 6:40
13 BOS 1:10	14	15 WSH 6:40	16 WSH 3:10	17 BAL 7:05	18 BAL 7:05	19 BAL 7:05
20 BAL 1:05	21 NYM 7:10	22 NYM 7:10	23 NYM 7:10	24	25 PHI 6:40	26 PHI 6:40
27 PHI 3:10	28	29	30			

■ HOME GAME □ AWAY GAME (Schedule subject to change)

150" big screen plus 5 additional TV's!

Plenty of room to social distance!



Football Finally

Bring your friends!



All September Tailgates will be themed pot lucks : Use the sign up sheet at the Lodge, or you can text Rita Smith at 813-431-3020 to prevent duplicates. We will eat at halftime.



Tampa Bay's Quarterback Tom Brady

SUNDAY

SEPTEMBER 13

4:25

Season Opener!

Doors open at 4:00

Tailgate Theme -New Orleans



New Orleans's Quarterback, Dree Brees



Panther's QB Teddy Bridgewater

Carolina VS Tampa Bay
September 20 1:00

Doors open 12:30

Tailgate Theme—The Carolinas Cuisine



Buccaneer's QB Tom Brady



Buccaneer's QB Tom Brady

Tampa Bay VS Denver
September 27 4:25

Doors open 4:00

Tailgate Food—Colorado Cuisine



Bronco's QB Drew Lock



- Chips \$1.00
- Hot Dog \$1.00
- Popcorn \$1.00
- Chips and Salsa \$2.00
- Basket-O-Fries \$3.00
- Sweet Potato Fries (w/ buttery syrup) \$3.50

- Onion Rings \$5.00
- Breaded Mushrooms (w/dipping sauce) \$5.00
- Ravioli (5 w/marinara) \$5.00
- Chicken Tenders (5 w/dipping sauce) \$6.00
- Mozzarella Sticks (6 w/marinara) \$6.00
- Jalapeno Poppers (6/w dipping sauce) \$6.00

Fried Shrimp Basket (w/fries) \$7.00

12" Pizza \$7.00
(Cheese, Pepperoni, Supreme, Sausage)

Sampler Basket \$12.00
(2 Mozzarella sticks, 2 chicken tenders, 2 jalapeno poppers, breaded mushrooms, French fries)

Doug's Buffalo Hot Wings

(Sold only every other Sunday)

- 6-wings \$5.00 10-wings \$8.00
- Baskets (w/French Fries and celery sticks) \$11.00
- Dipping sauces....BBQ, Honey Mustard, Ranch, Blue Cheese

(Elk's Snack Bar only open when no other dinner or special food event are NOT scheduled at the lodge.)



Oct. 3rd - 5 until 8pm

Bratwurst, all the trimmings,

Strudel plus fun Wear your costume!

Details on Lodge flyers.

IF YOU GO, PLEASE LET ME KNOW!

As your Tampa Lodge Chairman for Inter-lodge Visitation, it is my job to file a quarterly report that details how many of our members and their guests participated in Official Visits at other Lodges.

Of course, the most often reported Official Visits are the VP Visitations. Unfortunately, all of the previously scheduled VP Visitations have been cancelled at this point. We are hopeful that they can take place later in the Lodge year.

That doesn't automatically mean there is nothing to report! The Criteria for an Official Visit is pretty simple- the other lodge is having some kind of event, and at least 4 Elks from our Lodge attended the event. The event could be as simple as a Sunday breakfast or as ornate as a Black-Tie Gala. Of course, the most often reported Official Visits are the VP Visitations

I can't file my report properly if I don't have the information, so if you attend a dinner, special event, Memorial Service, DD Clinic, PER, PLP, Army of Hope Meeting or any other event that is held at a Lodge, be sure to tell me about it!

Fraternally,

Paul Deland, Chairman of Inter-Lodge Visitation

Scholarship Report



If you want to know how the ENF makes a difference in the lives of our youth, look no further than **Kendall Runyan**. Kendall graduated from Robinson's IB program and applied for a Most Valuable Scholar (MVS) scholarship 4 years ago. That was when the paperwork had to be turned in at your Local Lodge, and Paul Deland was the scholarship chair that year. Patty Jankiewicz knew the family and encouraged Kendall to apply.

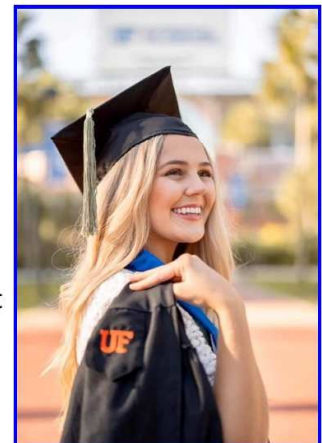
Tampa Lodge advanced her application, and she was eventually awarded a \$4000 MVS scholarship. Additionally, most of her family ended up joining Tampa Elks Lodge. Her Elks family includes Anne Lo Cicero, Devoney and Vince Bedami, and Jacquie and Joe LoCicero.

Kendall has now graduated, with Honors of course, from the University of Florida. After receiving many offers, she had decided to remain a Gator as she pursues her Law Degree .

MVS scholarships are now open. The application is completed by the student online, and this year no SAT or ACT score is needed. There is a section the school college counselor must complete, so students should start early.

Help make sure this year's top seniors are applying for this scholarship, and let's help these students reduce their college debts.

To apply students should go to **ENF.Elks.org/MVS** and hit the big blue box that says "Apply Now." **The deadline is November 15th.**



Rita Smith, Scholarship Chair



Charity for Youth at Tampa #708



Mary Win Wilson Proudfoot utilized social media to ask The community to help her teach her art classes at Robinson High School. The county has a new hybrid virtual or classroom teaching platform, and she felt a large screen TV Would facilitate her teaching. Tampa Elk's Past Exalted Ruler, Shelagh Gombarcik, saw the social media post and stepped up.

Shelagh presented the project to the Board of Directors and the Membership, who agreed she could use the lodge's charity fund to make the purchase. PER Gombarcik delivered the TV and a wall mount to the school by the first week of classes. Pictured-L-R- Shelagh Gombarcik, PER and Robinson High Art Instructor Mary Proudfoot.



September 24th-26th

SAVE THE DATE!
FLOE CONFERENCE
 September 24th-26th

~~~~~

Enjoy the experience of reuniting with old friends, making new ones, and sharing ideas....  
**AND....**  
 Helping us Support our Charities!



Lido Beach Resort,  
Sarasota, Florida

Friday, September 25th

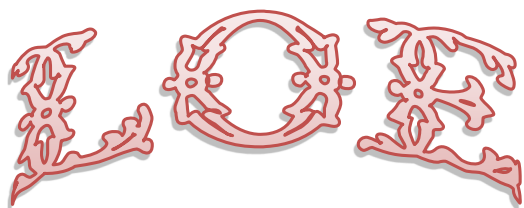
Cocktails 5:00 p.m.

Dinner 6:15 p.m.

Music & Dancing 7:00 p.m.

Dress is "Business Casual",  
or...."Dress the era of  
MOTOWN!"





# An Auxiliary of Tampa Elks #708



As I sit here today I realize that I'm already writing an article for the August/ Summer Elksize. Normally, we would have had at least two major fundraisers and as it is with this life altering, horrible disease called Covid-19 we haven't been able to do anything. I, however, am inclined to do an event. With all the precautions we already take; strict masks, hand washing, and social distancing perhaps it is time for the Ladies to decide on what we would like to do. Do we want music and dancing or some much needed laughter and silliness? I vote both! I very much want to be with people who make me laugh. After all, smiles are free, so let's share them. Of course there is a drawback. I would need to put up a sign-up sheet on the Ladies LOE Bulletin Board to see how many Ladies, Elks and visitors would sign up to come. Hopefully we can plan for the first part of October and then if that is successful we could try again at the end of November.

The Ladies have increased our membership again thanks to Theresa and Susie. We currently have; 12 Lifetime Members with 25 + years as an LOE. We have 8 Honorary Lifetime Members with 10+ years of service and who are 75yrs young. That's 20 non paying members, 42 paying members of just \$15.00 a YEAR. We ask that you please come to our meeting on the 1st Wednesday of each month at 7:00PM and see what the Ladies do for our Elks as well as our Community. Hopefully you will want to join. The Ladies of the Elk are a wonderful Organization that have raised money and in turn donated to our Elks for the purchase of freezers, grills, beer coolers etc. We feel it is our duty to help this Lodge prosper and do well. That is why I believe it is time for an event.

Of course we will follow the guidelines of the Governor of FL, Ron DeSantis if we would need to postpone anything.

Please don't forget our Florida Ladies of the Elk State Conference at Lido Beach Resort in Sarasota September 24th-26th. It's a wonderful time to see other Ladies from all over the state. We have meetings that Susie and I will be going to as well as a luncheon. I would like to thank all who donated to the FLOE Booster page. We turned in \$91.00!

Thank you also to those who are donating gift cards for the LOE Christmas tree and don't forget to see Susie if you want to donate for a chance to win this fabulous prize! We will be taking the gift card tree to FLOE State Conference and the winning ticket will be drawn that Saturday. Good luck to all!

Lastly, the Ladies voted to change our regular 1st Wednesday of the month meeting to 7:00PM. Please write this on your calendars.

Respectfully submitted,

Betty Orcutt, Lady President

**LOE**  
**2020-21**  
**Officers**

|                         |                        |
|-------------------------|------------------------|
| <b>Betty Orcutt</b>     | <b>President</b>       |
| <b>Susie Harlow</b>     | <b>Vice President</b>  |
| <b>Bonnie Atwood</b>    | <b>Secretary</b>       |
| <b>Robert Bordonaro</b> | <b>Parliamentarian</b> |
| <b>Lisa Snyder</b>      | <b>Chaplain</b>        |

**CHECK THE DETAILS**  
**ON PAGE 5 FOR**  
**FLOE CONFERENCE**  
**AT LIDO BEACH RE-**  
**SORT**  
**SEPTEMBER 24-26**  
**OUR**  
**ANNUAL**  
**CONFERENCE!**

## ER Article:

Fortunately we've ducked multiple tropical storms and hurricanes this year. Which is great considering we're still digging our way out of this Covid Storm. This month numbers have looked better and we may be seeing the light at the end of the tunnel. However, since we're still not out of the woods please continue to check our website, look for emails, and give us a call if you have any questions regarding Events, hours, meals, and yes even meetings.

For those unable to attend Lodge Meetings due to Corona concerns, health issues, or being out of town, you can continue to attend meetings by Zoom. The online calendar has a clickable link, and there is a flyer in Elksize with information to enter the meeting by the video app or by calling in. However, please understand we are doing this as a courtesy for members. This is not a substitute for coming to meetings where you otherwise could have (so no sitting at home with a beer, while the rest of us are here).

I again need to thank Dee, Georgia, Delana, Jacquie, Shelagh, Bonnie, Shannon, Paul, Wendy, the House Committee and many others who have been able to keep our food and drink service open. I also want to thank Taylor and Doug for helping behind the bar. Without everyone's dedication, we couldn't remain open to our members.

Finally, please check out our online calendar for events. We're currently open with safety precautions, but we cannot afford to keep the social quarters open for 2 or 3 people. So stop by enjoy some time with friends and take advantage of what the Lodge has to offer.

I hope everyone is safe, and I look forward to seeing you soon.

Miles  
813-495-2308



<https://us02web.zoom.us/j/8138314280?pwd=SjBMZzFHRlBya1E5TW0zdWVnbGNXUT09>

Meeting ID: 813 831 4280

Password: 124970

One tap mobile

+13126266799,,8138314280#,,1#,124970# US (Chicago)

+16465588656,,8138314280#,,1#,124970# US (New York)

Dial by your location

+1 312 626 6799 US (Chicago)

+1 646 558 8656 US (New York)

+1 301 715 8592 US (Germantown)

+1 346 248 7799 US (Houston)

+1 669 900 9128 US (San Jose)

+1 253 215 8782 US (Tacoma)

Meeting ID: 813 831 4280

Password: 124970

**CURRENT RULES**—All members coming to the Lodge must wear a mask into the Lodge, sign in at the station at the bar and have their temperature checked by the bartender or a House Committee member. At the bar, please maintain the chairs in their assigned position, and avoid moving them into clusters. **REMEMBER:** In order to qualify we must purchase a food item along with any alcohol purchase! Masks may be removed while eating or drinking!

**BE SAFE AND CHECK CURRENT RULES ON EACH VISIT TO THE Lodge!**



# Coming in October!



## A Nightmare Before Christmas 2020 Halloween Extravaganza

Tampa Elks Lodge 708  
Saturday, October 31, 2020  
6:30 PM



Come join us for a frighteningly good time!

A Boofet of Delicious Delicacies  
Spooktacular Shocktails and Specialty Drinks  
Halloween Themed Food Contest

Trick or Treat Grab—Will you be lucky or not?  
Games and Prizes  
Costume Contest  
Haunted Maze—Enter if you dare!



# “FRIENDS OF 708” 1ST SUNDAY BREAKFAST RETURNS!



**SEPT. 6TH – 9AM TO 12PM**

## MENU SELECTIONS

**YOUR CHOICE OF 4**

- **2 SLICES OF FRENCH TOAST**
    - **SCRAMBLED EGGS**
  - **HASH BROWN CASSEROLE**
    - **2 STRIPS OF BACON**
    - **HOMEMADE SOUR CREAM BISCUITS**
- \$8.00**

**INCLUDES:**

**FRESH COFFEE, BUTTER AND SYRUP**

**EXTRA PORTIONS OF ANY OF THE ABOVE  
CAN BE PURCHASED FOR \$2 EACH**

**Or you could try our Keto Breakfast of  
an omelet stuffed pepper with 3 strips of  
bacon and coffee, also only \$8.00**



**Tampa Lodge 708  
3616 S. Gandy Blvd., Tampa, FL 33611**



Club T-shirt Front



Club Chivalry News



Club T-Shirt Back

The Students at TR Robinson HS are back in school. As of this writing – the Plan was for the first week to be virtual, then students that wished could come back on campus. With the ever-challenging pandemic altering the plans, by the time you get this, who knows? The Club's School sponsor Ms. Caroline Hand and I have kept in touch over the summer. She very much wants to continue the partnership between her Avid classroom and the Tampa Elks Lodge's Club Chivalry program. However, *the school board has dictated that there will be no clubs at all during the first semester, and then they will reevaluate.* We might have to make some changes, like breaking the club up into smaller groups due to our large size, or meeting outdoors. We will find a way! There is not even the volunteer sign up page on the Hillsborough County Schools website right now, but we will be ready to roll with the Club Activities the minute permission is given! The T-shirts pictured above are already in her classroom, ready for distribution. Four out of five of the classes Ms. Hand teaches already know about the Elks and Club Chivalry. Only the one class of freshman will be new.

One problem we will encounter is that there are not enough laptops for the larger class sizes. Schoolwork done and submitted online is much safer for the students and the teachers teachers. The students will wipe down their desk and equipment when they enter the room. Placing desks feet apart won't be possible, but the students will wear masks. The computers we donated a couple of years ago were "loaned out" during the shutdown last spring, and not all returned in usable condition. While the class sizes won't be known for another week or two – the senior and junior classes are larger this year, and very few Robinson students elected virtual school. We are currently investigating purchasing a few more computers for that classroom. . There is an issue in that only certain models are compatible with the school's operating system, and the only one showing on the approved list we were provided is \$700! We are hopeful that the list was mistakenly cut short or something, but with the chaos of this new school year, it might take a few weeks to sort out. Please keep the Club Chivalry teacher and students in your prayers.

Rita Smith

Impact Grant Manager

## 365 Club News

The 365 Club was initially started by the Florida Ladies of the Elks (FLOE) under the premise that anyone could spare a penny a day- or \$3.65 per year. With inflation, it should now be a nickel a day or \$18.25 per year. Lucky for us, many of our donors give much more than that, and the Ladies Organization does make a sizable donation to the Florida Elks Children's Therapy Services each year. This month, Tampa Ladies of the Elks will be sending a check for a thousand dollars to the 365 Club Chairman to add to the FLOE Donation. That is down by half from the previous couple of years due to the three events we missed during the pandemic. We hope to raise another thousand dollars by the end of the Lodge year, which we will present at the State President's Visit. Please continue to support this endeavor, even if the houses are not around the bar right now due to Covid. Any officer can accept your donation and forward it to me. You can also ask for a house to take home to fill up- they are in the dining room closet.

This month I received a full house from Richard Florence, a donation equivalent to a house from Robert Bordonero, and a very generous donation worth about 5 houses from Jackie Apple and I owe Donna Halsey thanks for about 8 houses worth of donations. I feel like I am missing somebody, so if that is you please let me know. How I would love to be typing your name in my article next month ! If you are one of the lucky ones that has not lost significant income due to the pandemic, please consider making a donation to this very worthy charity!

**Rita Smith**

**365 Club**

## House Committee Letter

Your House Committee has been busy as usual working to keep your lodge safe during this COVID pandemic. There have been many rules that have been temporarily put in place to keep us all safe so we are very appreciative when everyone follows them. I'm sure all of us are looking forward to congregating in close proximity and giving those Elks hugs that many of us miss. Social distancing, masks and sanitizing will continue to be part of our routine for some time. I hope to not have to pass the ritual on to the next House Committee!! Anyone ready to attend a "Take Down All These Signs" party? They are everywhere but essential for all of us as reminders to do what's important. Dee has been working hard in the kitchen providing us some great food. He makes sure there is a menu with restaurant quality food on many nights so please check out the calendar and stop in to enjoy a meal. If you missed 5<sup>th</sup> Friday on July 31<sup>st</sup> with Shelagh and Jacquie, the Cioppino (Italian Seafood Stew) was absolutely amazing. It would be awesome to see it on the menu again! It was worth the money! It's a lot of work to run the kitchen and volunteer to prepare meals so we are grateful to have these wonderful Elks helping to keep the lodge running.

We want to remind all of the committees and volunteers that anytime you use a room at the lodge for a project, meeting or event, that you should return tables and chairs for proper storage. It's not fair for a group coming in to use the area and have to move what was left by someone else.

We will continue doing what we do and taking care of the lodge and its members the best we can.

Please feel free to reach out to any member of the House Committee (Shannon Wheatley, Paul DeLand, Wendy Hall, Jacquie LoCicero, Sue Moore or Tommy Moore) if you have any questions, suggestions or concerns.

**DID YOU KNOW?**

**Entertainers & Fun Times!**

**Mark Your Calendar!**

**February 27th...**

**Time for a big old belly laugh & a look back in Lodge history....**

**It is a Talent Show**



Get your guitar tuned, your tap shoes polished and your funny skit all ready to go....

There will be good food, LOTS of entertainment and some time for those among us with talent (or just an interest in joining the fun!) to step forward and join in the "funnest" night of the Lodge year.

Details in following issues as plans develop.

If you already know you will be interested in being a part, or have some ideas about acts we can include, contact one of the committee formulating the event.....

Melissa Bertoch                      813-410-1873

Wendy Hall                                813-500-9433

Paul DeLand                              813-376-5401



**Editor's Note:** Each month we will be highlighting a Lodge Officer to help our newer members, and those who are remote, to better know them.

Shannon Wheatley – Lecturing Knight

I am a St. Petersburg native with 4 generations in the area currently Five generations were born at the same hospital! I'm married to Darryl (some of you call him my imaginary husband) with 3 awesome kids and 3 amazing grandbabies. I spent nearly 20 years in the pre-employment background screening industry supporting our Sales team and managing background and drug testing programs for multi-million dollar clients before running our business, Tampa Bay Fun Boat, full time.

I love traveling to the Caribbean (19 times so far) and am keeping all of my fingers and toes crossed that my sailing adventure in December happens as planned. Backstage at a Kenny Chesney concert is one of my favorite places to be because I meet the coolest people every time (Football players, team owners, other musicians and Miss Universe 2012)! I'll run from a flying cockroach but be the first to defend someone I care about in a fight. I don't give respect freely since I feel it is something that is earned but kindness goes a long way with me. When people stand up to bullies it makes my soul happy.

I am a Board & Committee Member for MGM Friends Charity Partners who has helped to raise thousands of dollars for local charities including Shriners Hospitals for Children and Black Dagger Military Hunt Club. The networking arm of that charity, MGM Friends, is how I came to the Tampa Elks.

This is my 3<sup>rd</sup> year as an Elk. During this time, I have been on the House Committee (current House Committee Chair), Convention Committee, Membership Committee and the Veterans Committee. My first Officer role was as Inner Guard and now Lecturing Knight. I am also the West Central District Army of Hope Chairman.

Most everyone has been absolutely awesome and I've met some wonderful people that I consider family. I'm looking forward to many more years of being an Elk!



# Bar Bingo

**Every Monday @ 6:30pm**

**If you like POKENO, then you will love Bar Bingo.**

**Played the same way as POKENO, cover your card with chips and WIN a prize.**

Take a chance with every flip of a card.  
Enjoy fabulous drinks made by Jessica, tasty Panini Sandwiches and stay for the fellowship



**\$1.00 donation/  
per card to play**



# On-Going Calendar



**Monday**  
**LET'S GET SOCIAL!**  
 We hope soon!



We're back!  
 Join us for  
 fine movies!



## Lodge Business and Programs



# Partners in Progress or PIP

### Platinum Investors \$100+

- Fennell, Jerrye, Patrick & Cheryl 7/21
- Fennell, Pat & Marilyn 7/21
- Appel, Jackie 7/21
- Palladini, Frank 2/21
- Schneider, R & J 2/21
- Suhrheinrich, Bob & Candace 1/21
- Miller, Scott & Beth 10/20
- Florance, Richard 11/2021
- Waldbart, Mark 8/23
- Bertoch, Melissa 2/21
- Atwood, Bonnie 2/21
- Smith, R 2/21
- Miles, ER, Chris 2/21
- Jones, Laura 2/21
- Brennen, J. 3/21
- Edwards, Bill 5/21
- Bertoch, Jan 6/21`

To increase the financial strength of Tampa Elks Lodge #708, ensuring that our Lodge will be around for another 100 years. We will accomplish this by rebuilding our capital through investments made by Lodge Partners who are determined to secure Tampa Elks Lodge #708 future. Interest earned on the investments will remain in the investment account. Our goal is to increase our overall financial strength determined to secure the future of Tampa Elk's 708

### Gold Investors \$51-\$99

- McLaughlin, Susan & Mark 10/20
- Bordenaro, Robert 7/21

### Silver Investors \$21-\$50

- Lake, Sandra (Member) 10/20
- Lake, David & Carol 10/20
- Tuttle, Peggy 10/20


### Bronze Investors \$10 - \$20

- Wheatley, Shannon 2/21
- Buikema, Douglas & Carol 10/20
- Piser, Carol 10/20
- Lynn, Camden 2/21

**Elks Care - Elks Share**

# September 2020



| Sunday                                                                                                              | Monday                                                                                | Tuesday                                                             | Wednesday                                                                                                           | Thursday                                                                                                                                                                                                                                                                                                                                                                                                                                                                                                                                                                                                                                                                                                                                                                                                                                                                                                                                                                                                                                                                                                                                                                                                                                                                                                | Friday                                                                        | Saturday                                                      |          |    |    |    |    |    |          |   |  |  |  |  |  |   |   |   |   |   |   |   |   |   |   |   |   |   |   |  |  |  |  |  |  |   |  |  |  |  |  |   |   |   |   |   |   |   |   |   |   |   |   |   |   |   |   |    |   |    |    |    |    |    |    |    |    |    |    |    |    |    |    |    |    |    |    |    |    |    |    |    |    |    |    |    |    |    |    |    |    |    |    |    |    |    |    |    |    |    |    |    |  |  |  |  |  |  |  |  |  |  |  |  |
|---------------------------------------------------------------------------------------------------------------------|---------------------------------------------------------------------------------------|---------------------------------------------------------------------|---------------------------------------------------------------------------------------------------------------------|---------------------------------------------------------------------------------------------------------------------------------------------------------------------------------------------------------------------------------------------------------------------------------------------------------------------------------------------------------------------------------------------------------------------------------------------------------------------------------------------------------------------------------------------------------------------------------------------------------------------------------------------------------------------------------------------------------------------------------------------------------------------------------------------------------------------------------------------------------------------------------------------------------------------------------------------------------------------------------------------------------------------------------------------------------------------------------------------------------------------------------------------------------------------------------------------------------------------------------------------------------------------------------------------------------|-------------------------------------------------------------------------------|---------------------------------------------------------------|----------|----|----|----|----|----|----------|---|--|--|--|--|--|---|---|---|---|---|---|---|---|---|---|---|---|---|---|--|--|--|--|--|--|---|--|--|--|--|--|---|---|---|---|---|---|---|---|---|---|---|---|---|---|---|---|----|---|----|----|----|----|----|----|----|----|----|----|----|----|----|----|----|----|----|----|----|----|----|----|----|----|----|----|----|----|----|----|----|----|----|----|----|----|----|----|----|----|----|----|----|--|--|--|--|--|--|--|--|--|--|--|--|
|  <p><b>Octoberfest Oct 3rd</b></p> |                                                                                       | <p><b>1</b></p> <p>7:00p - LOE BOD</p> <p>7:30p - Movie Night</p>   | <p><b>2</b></p> <p>7:30p - LOE Gen. Mtg.</p> <p>6:45p - Dinner</p>                                                  | <p><b>3</b></p> <p>Open Grill Night by Dee</p> <p>Queen of Hearts - Donate by 6:45p</p>                                                                                                                                                                                                                                                                                                                                                                                                                                                                                                                                                                                                                                                                                                                                                                                                                                                                                                                                                                                                                                                                                                                                                                                                                 | <p><b>4</b></p> <p>Ham Steak Dinner</p> <p>6:30-8:30pm</p>                    | <p><b>5</b></p>                                               |          |    |    |    |    |    |          |   |  |  |  |  |  |   |   |   |   |   |   |   |   |   |   |   |   |   |   |  |  |  |  |  |  |   |  |  |  |  |  |   |   |   |   |   |   |   |   |   |   |   |   |   |   |   |   |    |   |    |    |    |    |    |    |    |    |    |    |    |    |    |    |    |    |    |    |    |    |    |    |    |    |    |    |    |    |    |    |    |    |    |    |    |    |    |    |    |    |    |    |    |  |  |  |  |  |  |  |  |  |  |  |  |
| <p><b>6</b></p> <p>Pancake Breakfast 9am -12pm</p>                                                                  | <p><b>7</b></p> <p>5:30-8:00p Georgia's Panini Monday</p>                             | <p><b>8</b></p> <p>7:15p - Lodge BOD</p> <p>7:30p - Movie Night</p> | <p><b>9</b></p> <p>7:30p - Lodge Meeting</p>                                                                        | <p><b>10</b></p> <p>Open Grill Night by Dee</p> <p>Queen of Hearts - Donate by 6:45p</p>                                                                                                                                                                                                                                                                                                                                                                                                                                                                                                                                                                                                                                                                                                                                                                                                                                                                                                                                                                                                                                                                                                                                                                                                                | <p><b>11</b></p> <p>BBQ Ribs &amp; Chicken Dinner</p> <p>6:30-8:30pm \$12</p> | <p><b>12</b></p> <p>6:30pm Birthday Bash, Pot-luck dinner</p> |          |    |    |    |    |    |          |   |  |  |  |  |  |   |   |   |   |   |   |   |   |   |   |   |   |   |   |  |  |  |  |  |  |   |  |  |  |  |  |   |   |   |   |   |   |   |   |   |   |   |   |   |   |   |   |    |   |    |    |    |    |    |    |    |    |    |    |    |    |    |    |    |    |    |    |    |    |    |    |    |    |    |    |    |    |    |    |    |    |    |    |    |    |    |    |    |    |    |    |    |  |  |  |  |  |  |  |  |  |  |  |  |
| <p><b>13</b></p> <p>4:25pm Bucs at Saints</p>                                                                       | <p><b>14</b></p> <p>5:30-8:00p Georgia's Panini Monday</p>                            | <p><b>15</b></p> <p>7:30p - Movie Night</p>                         | <p><b>16</b></p> <p>6:30-8:30pm Soup &amp; Sammich Night (Chicken Noodle, Chicken Salad/Grilled Chicken Ceaser)</p> | <p><b>17</b></p> <p>Open Grill Night by Dee</p> <p>Queen of Hearts - Donate by 6:45p</p>                                                                                                                                                                                                                                                                                                                                                                                                                                                                                                                                                                                                                                                                                                                                                                                                                                                                                                                                                                                                                                                                                                                                                                                                                | <p><b>18</b></p> <p>Grill Night</p> <p>5:30-8:30pm</p>                        | <p><b>19</b></p>                                              |          |    |    |    |    |    |          |   |  |  |  |  |  |   |   |   |   |   |   |   |   |   |   |   |   |   |   |  |  |  |  |  |  |   |  |  |  |  |  |   |   |   |   |   |   |   |   |   |   |   |   |   |   |   |   |    |   |    |    |    |    |    |    |    |    |    |    |    |    |    |    |    |    |    |    |    |    |    |    |    |    |    |    |    |    |    |    |    |    |    |    |    |    |    |    |    |    |    |    |    |  |  |  |  |  |  |  |  |  |  |  |  |
| <p><b>20</b></p> <p>1pm Bucs vs Panthers Lodge Open Early</p> <p>New Member Orientation 4pm</p>                     | <p><b>21</b></p> <p>5:30-8:00p Georgia's Panini Monday</p> <p>6:30p - House Comm.</p> | <p><b>22</b></p> <p>7:30p - Movie Night</p>                         | <p><b>23</b></p> <p>7:30p - Lodge Meeting</p>                                                                       | <p><b>24</b></p> <p>Open Grill Night by Dee</p> <p>Queen of Hearts - Donate by 6:45p</p>                                                                                                                                                                                                                                                                                                                                                                                                                                                                                                                                                                                                                                                                                                                                                                                                                                                                                                                                                                                                                                                                                                                                                                                                                | <p><b>25</b></p> <p>Grill Night</p> <p>5:30-8:30pm</p>                        | <p><b>26</b></p>                                              |          |    |    |    |    |    |          |   |  |  |  |  |  |   |   |   |   |   |   |   |   |   |   |   |   |   |   |  |  |  |  |  |  |   |  |  |  |  |  |   |   |   |   |   |   |   |   |   |   |   |   |   |   |   |   |    |   |    |    |    |    |    |    |    |    |    |    |    |    |    |    |    |    |    |    |    |    |    |    |    |    |    |    |    |    |    |    |    |    |    |    |    |    |    |    |    |    |    |    |    |  |  |  |  |  |  |  |  |  |  |  |  |
| <p><b>FLOE Conference - Lido Beach Resort</b></p>                                                                   |                                                                                       |                                                                     |                                                                                                                     |                                                                                                                                                                                                                                                                                                                                                                                                                                                                                                                                                                                                                                                                                                                                                                                                                                                                                                                                                                                                                                                                                                                                                                                                                                                                                                         |                                                                               |                                                               |          |    |    |    |    |    |          |   |  |  |  |  |  |   |   |   |   |   |   |   |   |   |   |   |   |   |   |  |  |  |  |  |  |   |  |  |  |  |  |   |   |   |   |   |   |   |   |   |   |   |   |   |   |   |   |    |   |    |    |    |    |    |    |    |    |    |    |    |    |    |    |    |    |    |    |    |    |    |    |    |    |    |    |    |    |    |    |    |    |    |    |    |    |    |    |    |    |    |    |    |  |  |  |  |  |  |  |  |  |  |  |  |
| <p><b>27</b></p> <p>4:25 Bucs at Broncos</p>                                                                        | <p><b>28</b></p> <p>5:30-8:00p Georgia's Panini Monday</p>                            | <p><b>29</b></p> <p>7:30p - Movie Night</p>                         | <p><b>30</b></p> <p>Spaghetti Dinner</p> <p>6:30-8:30pm</p>                                                         | <table border="1" style="width: 100%;"> <thead> <tr> <th colspan="7">Aug 2020</th> <th colspan="7">Oct 2020</th> </tr> <tr> <th>S</th><th>M</th><th>T</th><th>W</th><th>T</th><th>F</th><th>S</th> <th>S</th><th>M</th><th>T</th><th>W</th><th>T</th><th>F</th><th>S</th> </tr> </thead> <tbody> <tr> <td></td><td></td><td></td><td></td><td></td><td></td><td>1</td> <td></td><td></td><td></td><td></td><td></td><td>1</td><td>2</td><td>3</td> </tr> <tr> <td>2</td><td>3</td><td>4</td><td>5</td><td>6</td><td>7</td><td>8</td> <td>4</td><td>5</td><td>6</td><td>7</td><td>8</td><td>9</td><td>10</td> </tr> <tr> <td>9</td><td>10</td><td>11</td><td>12</td><td>13</td><td>14</td><td>15</td> <td>11</td><td>12</td><td>13</td><td>14</td><td>15</td><td>16</td><td>17</td> </tr> <tr> <td>16</td><td>17</td><td>18</td><td>19</td><td>20</td><td>21</td><td>22</td> <td>18</td><td>19</td><td>20</td><td>21</td><td>22</td><td>23</td><td>24</td> </tr> <tr> <td>23</td><td>24</td><td>25</td><td>26</td><td>27</td><td>28</td><td>29</td> <td>25</td><td>26</td><td>27</td><td>28</td><td>29</td><td>30</td><td>31</td> </tr> <tr> <td>30</td><td>31</td><td></td><td></td><td></td><td></td><td></td> <td></td><td></td><td></td><td></td><td></td><td></td><td></td> </tr> </tbody> </table> |                                                                               | Aug 2020                                                      |          |    |    |    |    |    | Oct 2020 |   |  |  |  |  |  | S | M | T | W | T | F | S | S | M | T | W | T | F | S |  |  |  |  |  |  | 1 |  |  |  |  |  | 1 | 2 | 3 | 2 | 3 | 4 | 5 | 6 | 7 | 8 | 4 | 5 | 6 | 7 | 8 | 9 | 10 | 9 | 10 | 11 | 12 | 13 | 14 | 15 | 11 | 12 | 13 | 14 | 15 | 16 | 17 | 16 | 17 | 18 | 19 | 20 | 21 | 22 | 18 | 19 | 20 | 21 | 22 | 23 | 24 | 23 | 24 | 25 | 26 | 27 | 28 | 29 | 25 | 26 | 27 | 28 | 29 | 30 | 31 | 30 | 31 |  |  |  |  |  |  |  |  |  |  |  |  |
| Aug 2020                                                                                                            |                                                                                       |                                                                     |                                                                                                                     |                                                                                                                                                                                                                                                                                                                                                                                                                                                                                                                                                                                                                                                                                                                                                                                                                                                                                                                                                                                                                                                                                                                                                                                                                                                                                                         |                                                                               |                                                               | Oct 2020 |    |    |    |    |    |          |   |  |  |  |  |  |   |   |   |   |   |   |   |   |   |   |   |   |   |   |  |  |  |  |  |  |   |  |  |  |  |  |   |   |   |   |   |   |   |   |   |   |   |   |   |   |   |   |    |   |    |    |    |    |    |    |    |    |    |    |    |    |    |    |    |    |    |    |    |    |    |    |    |    |    |    |    |    |    |    |    |    |    |    |    |    |    |    |    |    |    |    |    |  |  |  |  |  |  |  |  |  |  |  |  |
| S                                                                                                                   | M                                                                                     | T                                                                   | W                                                                                                                   | T                                                                                                                                                                                                                                                                                                                                                                                                                                                                                                                                                                                                                                                                                                                                                                                                                                                                                                                                                                                                                                                                                                                                                                                                                                                                                                       | F                                                                             | S                                                             | S        | M  | T  | W  | T  | F  | S        |   |  |  |  |  |  |   |   |   |   |   |   |   |   |   |   |   |   |   |   |  |  |  |  |  |  |   |  |  |  |  |  |   |   |   |   |   |   |   |   |   |   |   |   |   |   |   |   |    |   |    |    |    |    |    |    |    |    |    |    |    |    |    |    |    |    |    |    |    |    |    |    |    |    |    |    |    |    |    |    |    |    |    |    |    |    |    |    |    |    |    |    |    |  |  |  |  |  |  |  |  |  |  |  |  |
|                                                                                                                     |                                                                                       |                                                                     |                                                                                                                     |                                                                                                                                                                                                                                                                                                                                                                                                                                                                                                                                                                                                                                                                                                                                                                                                                                                                                                                                                                                                                                                                                                                                                                                                                                                                                                         |                                                                               | 1                                                             |          |    |    |    |    | 1  | 2        | 3 |  |  |  |  |  |   |   |   |   |   |   |   |   |   |   |   |   |   |   |  |  |  |  |  |  |   |  |  |  |  |  |   |   |   |   |   |   |   |   |   |   |   |   |   |   |   |   |    |   |    |    |    |    |    |    |    |    |    |    |    |    |    |    |    |    |    |    |    |    |    |    |    |    |    |    |    |    |    |    |    |    |    |    |    |    |    |    |    |    |    |    |    |  |  |  |  |  |  |  |  |  |  |  |  |
| 2                                                                                                                   | 3                                                                                     | 4                                                                   | 5                                                                                                                   | 6                                                                                                                                                                                                                                                                                                                                                                                                                                                                                                                                                                                                                                                                                                                                                                                                                                                                                                                                                                                                                                                                                                                                                                                                                                                                                                       | 7                                                                             | 8                                                             | 4        | 5  | 6  | 7  | 8  | 9  | 10       |   |  |  |  |  |  |   |   |   |   |   |   |   |   |   |   |   |   |   |   |  |  |  |  |  |  |   |  |  |  |  |  |   |   |   |   |   |   |   |   |   |   |   |   |   |   |   |   |    |   |    |    |    |    |    |    |    |    |    |    |    |    |    |    |    |    |    |    |    |    |    |    |    |    |    |    |    |    |    |    |    |    |    |    |    |    |    |    |    |    |    |    |    |  |  |  |  |  |  |  |  |  |  |  |  |
| 9                                                                                                                   | 10                                                                                    | 11                                                                  | 12                                                                                                                  | 13                                                                                                                                                                                                                                                                                                                                                                                                                                                                                                                                                                                                                                                                                                                                                                                                                                                                                                                                                                                                                                                                                                                                                                                                                                                                                                      | 14                                                                            | 15                                                            | 11       | 12 | 13 | 14 | 15 | 16 | 17       |   |  |  |  |  |  |   |   |   |   |   |   |   |   |   |   |   |   |   |   |  |  |  |  |  |  |   |  |  |  |  |  |   |   |   |   |   |   |   |   |   |   |   |   |   |   |   |   |    |   |    |    |    |    |    |    |    |    |    |    |    |    |    |    |    |    |    |    |    |    |    |    |    |    |    |    |    |    |    |    |    |    |    |    |    |    |    |    |    |    |    |    |    |  |  |  |  |  |  |  |  |  |  |  |  |
| 16                                                                                                                  | 17                                                                                    | 18                                                                  | 19                                                                                                                  | 20                                                                                                                                                                                                                                                                                                                                                                                                                                                                                                                                                                                                                                                                                                                                                                                                                                                                                                                                                                                                                                                                                                                                                                                                                                                                                                      | 21                                                                            | 22                                                            | 18       | 19 | 20 | 21 | 22 | 23 | 24       |   |  |  |  |  |  |   |   |   |   |   |   |   |   |   |   |   |   |   |   |  |  |  |  |  |  |   |  |  |  |  |  |   |   |   |   |   |   |   |   |   |   |   |   |   |   |   |   |    |   |    |    |    |    |    |    |    |    |    |    |    |    |    |    |    |    |    |    |    |    |    |    |    |    |    |    |    |    |    |    |    |    |    |    |    |    |    |    |    |    |    |    |    |  |  |  |  |  |  |  |  |  |  |  |  |
| 23                                                                                                                  | 24                                                                                    | 25                                                                  | 26                                                                                                                  | 27                                                                                                                                                                                                                                                                                                                                                                                                                                                                                                                                                                                                                                                                                                                                                                                                                                                                                                                                                                                                                                                                                                                                                                                                                                                                                                      | 28                                                                            | 29                                                            | 25       | 26 | 27 | 28 | 29 | 30 | 31       |   |  |  |  |  |  |   |   |   |   |   |   |   |   |   |   |   |   |   |   |  |  |  |  |  |  |   |  |  |  |  |  |   |   |   |   |   |   |   |   |   |   |   |   |   |   |   |   |    |   |    |    |    |    |    |    |    |    |    |    |    |    |    |    |    |    |    |    |    |    |    |    |    |    |    |    |    |    |    |    |    |    |    |    |    |    |    |    |    |    |    |    |    |  |  |  |  |  |  |  |  |  |  |  |  |
| 30                                                                                                                  | 31                                                                                    |                                                                     |                                                                                                                     |                                                                                                                                                                                                                                                                                                                                                                                                                                                                                                                                                                                                                                                                                                                                                                                                                                                                                                                                                                                                                                                                                                                                                                                                                                                                                                         |                                                                               |                                                               |          |    |    |    |    |    |          |   |  |  |  |  |  |   |   |   |   |   |   |   |   |   |   |   |   |   |   |  |  |  |  |  |  |   |  |  |  |  |  |   |   |   |   |   |   |   |   |   |   |   |   |   |   |   |   |    |   |    |    |    |    |    |    |    |    |    |    |    |    |    |    |    |    |    |    |    |    |    |    |    |    |    |    |    |    |    |    |    |    |    |    |    |    |    |    |    |    |    |    |    |  |  |  |  |  |  |  |  |  |  |  |  |

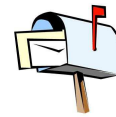
# Elks Tampa 708 size

3616 Gandy Blvd.  
Tampa, FL 33611

NON-PROFIT  
ORGANIZATION  
U.S. POSTAGE  
PAID  
TAMPA, FL  
PERMIT #32



Like us on Facebook to  
receive updates and late  
breaking news.  
Tampa Elks Lodge #708



Please remember to send  
any change of address to:  
[lodge708secretary@outlook.com](mailto:lodge708secretary@outlook.com)

In Memory of Tom Stanton - 9/2018  
Rebecca Sullins - 2/2019  
Debbie Osterbrock - 4/2019  
  
Jerry & Patrick Fennell 6/2019  
Robert Bordonaro 7/2019  
Mrs. Helen Stanton,  
Bonnie Atwood - 9/2019  
Brenda Stokking and Bob Norton 11/2019  
Suhrheinrich, Bob & Candi 4/20  
Shannon Wheatley 6/2022  
Jerrye, Patrick & Cheryl Fennel 6/21  
Pat & Marilyn Fennel 6/21  
Robert Bordanero 7/22  
Donna Halsey—6/2021  
Frances Aberle—8/2021



Bill Deen - 6/2020  
Deborah Cassels 6/2020  
Berni Turpin,  
In Memory of Robert Connor 7/2020  
Bud Cash 11/2020  
In memory of  
John F. Morris - 3/2021  
South Tampa Chamber of Commerce  
2/2023  
Vera Wright-  
In Memory of Harold Wright 6/2023

Support the Elksize

Be an SOB - Smiling 'Ole' Booster

\$10.00 a year helps to defer the cost of our publication and allows  
us to direct more of our annual income to the charities and organizations we support.  
Thank you!

## Friends of 708

### **OUR CURRENT SUSTAINING SUPPORTERS**

*Marty Quire Bonnie Quire Linda Reid Theresa Matthews Bonnie Atwood Nanette Quire  
Tommy & Susan Moore Mr & Mrs Orcutt Sharon Ford Richard Schneider Jacquie LoCicero  
Christopher Miles Mr & Mrs Suhrheinrich Susie Harlow Steve Harmon  
Lisa Snyder Pat & Marilyn Fennell Bill Deen Candy Venable Chris Ragusa  
Mr & Mrs Hilficker Shannon Wheatley Camden Lynn Laura Jones LOE 708*

### **OUR CURRENT ONE-TIME SUPPORTERS**

*H. Smith S. Washington R. Florance S. Owens S. Wheatley K. Higgins  
L. Snyder J. Megular M. Flowers J. Slater E. Clark R. Reiselt L. Jones  
V. Bihoral A. DeQuesada F. Williams E. Smith B. Atwood J. Wooley  
V. Thomas P & M Volpe*

This local program focuses solely on improving our lodge through generous member donations.  
All members are encouraged to sign up for the "Eleventh Hour Pledge". Your recurring  
pledge of \$11 a month will help maintain our lodge.