

**Covid-19**  
**Lodge Temporarily Closed!**

**INSIDE there be good stuff!!!!**

**Check  
email,  
website,  
Elksize**

**for  
REOPENING  
PARTY  
Date!**

**Your House Committee  
Has BIG plans underway!  
See Page 12**

Elks helping Elks

Plans for Reopening

A video/Phone Lodge Meeting

“Did You Know?”

Lodge Liquor Room Improvements

ER's Message



**ELKS CARE-ELKS SHARE!!!**

**MEMBERS WITH NEEDS! READ THIS!**

We have formed a small team of helpers to assist our members with needs during this emergency situation. The Lodge office will NOT be open regular hours so please use one of our numbers to contact us so we can assist you with food needs, or other personal needs and we will be available as best we can.

Paul DeLand—813-376-5401

Shannon Wheatley—727-772-3446

Courtney Weil—813-813-484-0123



All assistance is, of course, entirely confidential! All items are by donation and not a cost to the Lodge! Food and paper goods included.

My Fellow Lodge Members....if you feel you could offer assistance by helping, or wish to donate to our small fund....please call one of us!



### **LODGE OFFICERS:**

**EXALTED RULER** - Chris Miles  
**LEADING KNIGHT** - Camden Lynn  
**LOYAL KNIGHT** - Paul DeLand  
**LECTURING KNIGHT** - Shannon Wheatley  
**SECRETARY** - Rick Schneider, PER  
**TREASURER** - Laura Jones  
**ESQUIRE** - George Hilficker  
**INNER GUARD**— Bob Suhrheinrich  
**TILER**— Jake Slater  
**CHAPLAIN** - Melissa Bertoch  
**5 YEAR TRUSTEE** - Bob Orcutt  
**4 YEAR TRUSTEE**—Tommy Moore  
**3 YEAR TRUSTEE** - Courtney Weil, PER  
**2 YEAR TRUSTEE**—Shelagh Gombarcik, PER  
**1 YEAR TRUSTEE** - Theresa Matthews, PDDGER  
**DISTRICT LEADER** - Frank Palladini, PSP, PDDGER  
**LODGE ADVISORS** - Steve Harmon, PDDGER  
 Theresa L. Matthews - PDDGER, WCD

### **HOUSE COMMITTEE:**

**CHAIR**—Shannon Wheatley  
**Members:** Wendy Hall, Candy Venable,  
 Paul DeLand, Sue Moore,  
 Jacquie LoCicero & Tommy Moore

### **LODGE COMMITTEES:**

**Hall Activities**—Jacquie LoCicero  
**Auditing Committee**—Chair, Melissa Bertoch,  
 Bonnie Atwood  
**Elks National Foundation**—Shelagh Gombarcik  
**Harry Anna Trust Fund**—Taylor Taylor  
**Veteran Services**—Patty Jankiewicz  
**Elksize Editor**—Paul DeLand

## **EOTM**

This month's Elk of The Month is Wendy Hall. Wendy continues to prove her dedication to Tampa Elks by serving on the House Committee, serving as their Secretary, and it seems continually finding new causes to dedicate her time and energy toward. Her current effort, despite the quarantine, is to the collection and delivery of food and other goods to our members who are unable to get out them selves during this time. She and her group have invested well over 100 hours to this cause. Let Wendy know she is appreciated as a dedicated Elk member.

## **OOTM**

Our Office of The Month is Courtney Weil. Along with Wendy, our EOTM, Courtney has been heavily involved in the newly-developed program for providing food and other goods to those unable to get out during the quarantine. In addition she has been involved in the grant program to collect items, bag them and deliver them to 200 homeless through our Sunday morning breakfast program. As if that were not enough she has handled delivery of the baskets collected and assembled, along with hot meals (at cost) for these folks. Send her a nice comment when you have a chance.

# REMINDER! May has only 1 Lodge Meeting!

**OUR MEETING WILL BE MAY 13TH...**

**MEETING TIME IS, AS ALWAYS, 7:30PM**

**THE MEETING WILL BE ONLINE!**

**ER Chris Miles is inviting you to a scheduled Zoom meeting.**

**Topic: Lodge Meeting**

**Time: May 13, 2020 07:30 PM Eastern Time (US and Canada)**

**Join Zoom Meeting**

<https://us02web.zoom.us/j/81863605625?pwd=d2xzWWpiQldZNXJsak10eWt2Y2FKdz09>

**Meeting ID: 818 6360 5625**

**Password: TampaElks**

One tap mobile (Phone, not video)

+16465588656,,81863605625#,,#,782944# US (New York)

+13126266799,,81863605625#,,#,782944# US (Chicago)

Dial by your location

+1 646 558 8656 US (New York)

+1 312 626 6799 US (Chicago)

+1 669 900 9128 US (San Jose)

+1 253 215 8782 US

+1 301 715 8592 US

+1 346 248 7799 US (Houston)

Meeting ID: 818 6360 5625

Password: 556533

Find your local number: <https://us02web.zoom.us/j/kbCyuUZMxv>

# During the coronavirus pandemic

We're proving that:

**Elks Care - Elks Share**

March 20th, 2020....the day our Lodge was closed and we were all in quarantine for the duration by edict of the Governor of Florida. It took only a few hours before a small group at the Lodge realized we had some members unable to take care of basic needs because of physical or other problems.

As these folks needs were immediately upon us, a small number of folks put together some food and paper goods donations, primarily from the group, along with hot meals from Courtney Weil's kitchen and her catering/meal service. The first delivery occurred almost overnight, and then the team realized this was a continuing problem. Calls were made and a notation placed in Elksize, asking for member donations through twice-weekly noon-til-three side-door collections. All goods donated were delivered the next day. As a result those we know of have been receiving meals and some paper goods to sustain them.

The entire process has consisted of a small group formed first by Shannon Wheatley, then several folks stepped up and volunteered to help. There were also food and other goods donors. The group include Wendy Hall, Paul DeLand, Shelagh Gombarcik, Jacquie LoCicero, and Courtney Weil whose company provided hot meals at half price to cover her costs, and also delivered the food and goods to our folks in need at no cost to Lodge or the group. The folks who donated and who helped will be recognized when the group completes their voluntary effort.



The Lodge has, of course, a Standing Relief Committee, composed of the chair officers and Secretary and Treasurer, formed under Grand Lodge Statutes. This committee can operate in situations of financial need and should be contacted through the Secretary.

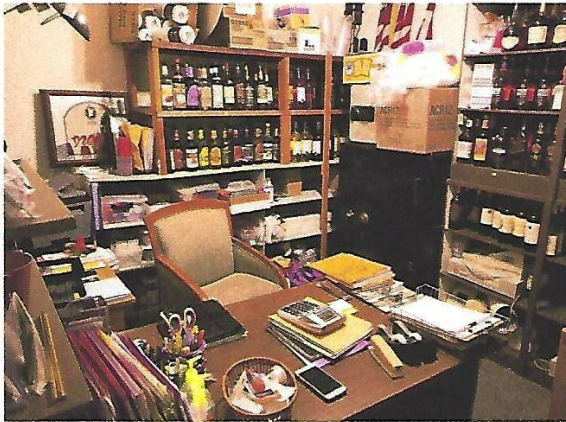


## Some of what we have accomplished!

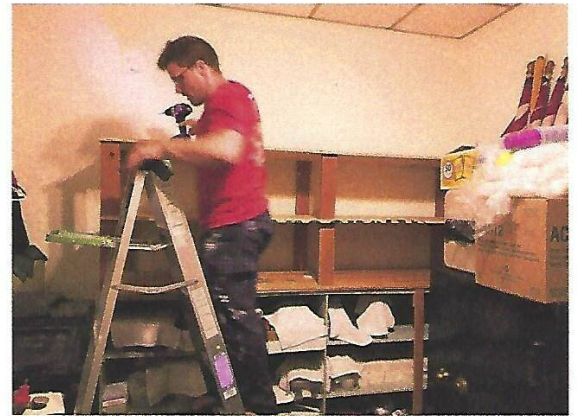
In helping those in need 6 Elks and 3 non-Elks have volunteered more than 115 hours of time and driven 425 miles to provide goods, both food and paper in about 30 boxes valued at more than \$800. This does not count the hours and miles of Courtney Weil as she delivered the boxes along with hot meals provided by her at cost.

# Liquor Room Update!

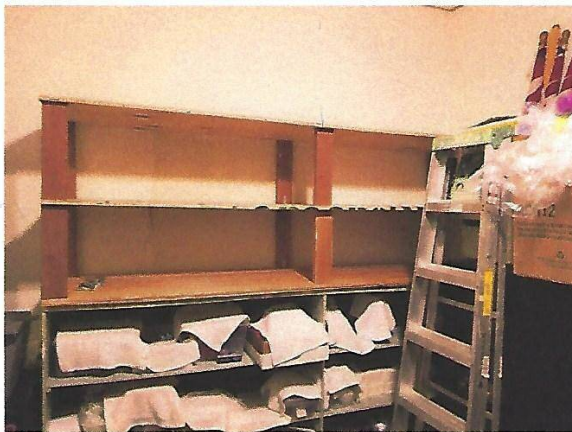
Taking advantage of the Lodge and Country shutdown Bar Manager Paul DeLand and his team are using the time to good advantage and working to complete an update, much needed expansion and reorganization of the Liquor Room.....



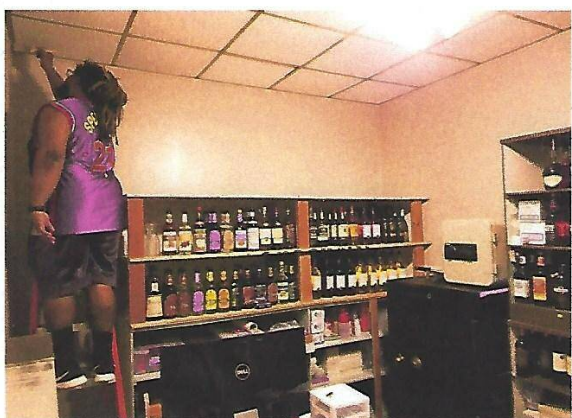
Photos of progress....  
At left: The OLD!



At right: Greg White, Jr. (Yes, our musician!) replaces shelves.

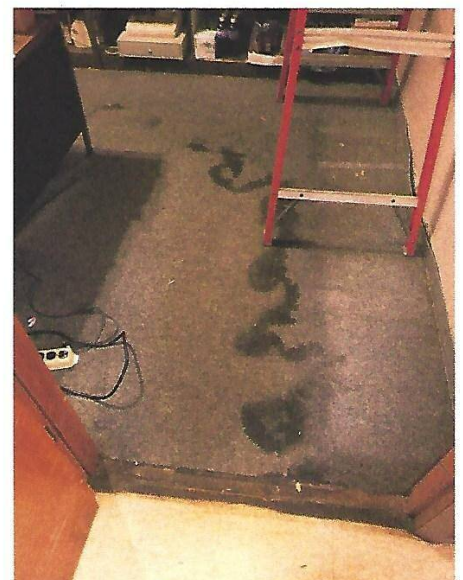


At Left: New Shelves...and  
At right: Liquor on new, expanded shelves!



At left: Renard Maxwell brings a bright look with new paint!

Still to be done:  
At right: Carpet needed to replace this mess!  
8' by 12'



**NOTE: All work and materials are at no cost to the Lodge!**

# Reminder!!!

Please pay your dues for the  
2020-2021 Lodge year.

While we are closed for the virus which confronts us, our expenses continue as do the needs for our charitable giving!

If you already paid, Thanks!

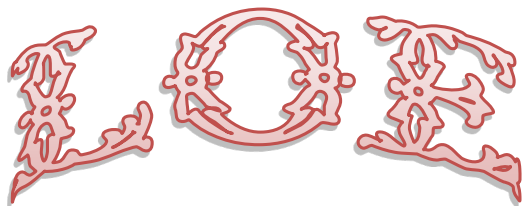


This is

the ON-

LY card which will

Get you in for the Reopening!



# An Auxiliary of Tampa Elks #708



Hello everyone. Your Ladies Organization may be shut down at the Lodge but we are still busy working for you and planning for the future. With that said, I add, "Ideas are funny things. They don't work unless you do." So I ask each one of you to " please use the talents you possess; because the woods would be very silent if no birds sang except the best." Our Ladies are the best. We have some very talented people and I want to hear you sing.

We all know that this flu virus will pass just as all the past flus have, but with this one, where so much is unknown about it please continue to be smart and stay home and stay safe.

We will not be able to have our May meeting at the Lodge but lets all pray that June will see us all back to normal and in our Lodge again.

Please, while we are closed, write down any ideas/thoughts that you may have to help us make things better for the Ladies and the Lodge. We will then discuss them openly.

Lastly, remember to send in your 2020/2021 dues ( of \$15.00) to the Lodge c/o Laura Jones, Treasurer.

If any one wants to reach me, my phone number is; 757-642-6596

Fraternally yours,  
Betty Orcutt Lady President

## LOE Birthdays (Including April)

Carolyn Breit 4/19

Jacque LoCicero PLP 4/6

Barbara Miller PLP 4/25

Carolyn Williams 4/7

John Wayne, PER 4/9

Bill Edwards, PER, PLP 5/19

Bob Orcutt 5/5

Rita Smith, PLP 5/12

Brenda Stokking 5/12

Thank you,

Lisa Snyder

LOE Chaplain 2020-2021

<b>LOE</b>	
<b>2020-21</b>	
<b>Officers</b>	
Betty Orcutt	President
Susie Harlow	Vice President
Bonnie Atwood	Secretary
Laura Jones	Treasurer
Robert Bordonaro	Parliamentarian
Lisa Snyder	Chaplain

**Elks Care - Elks Share**

## Exalted Ruler's Message....

By the time you are reading this we will have had our 2nd Zoom Lodge Meeting. If there is a silver lining to this **Corona cloud** it is that members who have previously been unable to attend meetings due to health, work, or being out of town, now have the ability to participate from afar. At this time we anticipate conducting the May 12th BOD Meeting and May 13th General Meeting by Zoom as well and all members in good standing are invited to attend meetings. Marty is sending a link, but if you didn't get it then please contact the secretary and he will verify your membership and email both phone and internet links to the meeting.

For those who don't know, there is only one meeting in May due to Elks State Convention May 20th – 24th. As of now State Convention is still scheduled to go on, but of course this may change depending on when and if the stay at home orders are lifted. The Florida State Elks COO/Secretary has advised deposits will be credited or refunded if convention is moved or cancelled. Reservation cutoff has also been extended until 5pm on Saturday May 16th.

At this moment we do not have a clear idea of when the Lodge will re-open although we are hoping sometime in early or mid-May (Please go to TampaElks.com for updates).

Our keycard readers were updated so members who have not yet renewed should do so now. You can call in, mail in, or pay online. Please understand the Lodge's sole means of income is from Dues, Donations, and Sales, and right now the Kitchen and Lounge are closed. Despite the office trying to cut down bills as much as they can, we still have monthly expenses which are due. We are fortunate to have several members donate in addition to regular dues which is really helping, but the donations cannot cover all our expenses. Your Dues payments are sorely needed. However, if for some reason you are unable to renew for some reason then please give the secretary a call and we'll try to help out where we can.

Finally, I want to thank **Courtney Weil, Shannon Wheatley, Wendy Hall, Paul DeLand, Shelagh Gombarcik and Jackie LoCicero** for organizing and putting together baskets for those in need using member donations including food, toiletries, and money to purchase them. The baskets have been given to our members, spouses, and LOE members in need, including delivering to those who are unable to drive. This was done completely with member donations further helping the Lodge stay financially secure. Well Done and a BIG THANKS to all those who Donated and all those who helped get the baskets out. At the time of me writing the baskets are still going out so please contact us if you need assistance.

*Miles*

**Elks** Care - **Elks** Share



**Hello Elk Friends,**

On behalf of the Tampa 708 Board of Directors, I hope you and yours are healthy and well currently. I suspect by now everyone has been impacted by COVID-19 in one way or another, and many have been directly impacted personally through your job or business. I know we have all heard it is “unprecedented times” and I do not disagree. This is something I read about in fiction books, not in real life! Until now, that is.

The amazing thing is the way people have come together to do their part to either help not spread the virus or reach out and help others in need. The one thing I am not, is surprised! After 24 years of being an Elk, I know how much “Elks Care, Elks Share”. As you all may know, in recognition of the Governor’s order to “Stay Home”, our Lodge has been closed since March 20. We had to cancel many events, meetings, and just general socializing. We even had to install our new 2020 Officers via e-mail. We did our first BOD meeting via Zoom on April 7 and had our first ever virtual Lodge meeting via Zoom on April 8. It was actually very interesting and was good to see a lot of people we have missed seeing down at the Lodge.

As much as we would never have wished this on anyone in the world, I think we are going to see a lot of new ideas, new ways of getting things done, especially through technology, and a whole new “normal”. I don’t think anyone can really predict what life will be like after this. One thing that is still there is your Tampa Lodge 708! We have been here since 1902 and I sure hope we continue. However, we cannot do that without the Members. The Members are what makes a Lodge, not the building. We still must pay the bills for our building whether we are open for business or not. This also includes our membership dues to Grand Lodge and FSEA.

The new Elk year started April 1, 2020. Anyone who has not paid their dues (\$104) after April 1 is considered delinquent. I know many people do NOT want to be delinquent, but it is hard to think about paying dues to something you can’t even go to! This virus will not last forever and we will be open again and back to business & fun! However, we must maintain our Lodge and financial obligations to have something for all our members to come back to.

If you have not renewed your membership in Tampa 708 yet, we are encouraging you to please do so. There are several ways to do so; mail a check, drop off a check, or on-line at <http://www.tampaelks.com/>. On-line is the fastest, easiest, and safest way currently! You can also contact our Lodge Secretary, Rick Schneider, at [Lodge708secretary@outlook.com](mailto:Lodge708secretary@outlook.com) or (813) 344-7050 to discuss how to renew your membership.

We also want you to know we are here for you! We want to hear from you if you need anything we could help provide at this time. Per statute 13.010, we have a Standing Relief Committee, comprised of the four Chair Officers, the Secretary, and the Treasurer. Please make any request for assistance with membership renewal dues to the Lodge secretary at the email above. Any requests will be kept confidential and referred to the Standing Relief Committee for recommendation on voting for relief (recipient confidential). As always, we are open to accepting donations of goods, dues payments for another, or gift cards for food & supplies, from those who are able, to help any of our fellow Elks in need.

WE HOPE TO BE OPEN FOR BUSINESS SOON AND HAVE A GRAND REOPENING TO WELCOME EVERYONE BACK!

**Sincerely & Fraternaly,  
Theresa Matthews, PDDGER  
Chairwoman, Tampa 708 Board of Directors**

**BOD**



# DID YOU KNOW?

How would you like to know more about your Lodge? There are a number of things, very interesting things, most of us either do not know, or have forgotten about our wonderful organization and its activities.

Many of us are long-time members of Tampa Lodge #708...some are new...and, some also come to us from other Lodges. All of us joined Elksdom for a reason. For most it was either to be with friends or to participate in the magnificent charitable causes of The Elks.

In our Lodge involvement we heard many things in our initiation, and perhaps we heard more from members at the bar. There is an interest in knowing....

We have decided to initiate this series:



Upcoming topics include; Friends of 708, Committee Highlights, PIP (Partners In Progress, a unique Tampa 708 project), Tampa Lodge's long history, SOBs (Smilin Ole Boosters!), 20'21 Project, and many more.

We hope you find these brief items interesting, and that they give you a much stronger knowledge of this Lodge founded in 1902...and help to give you pride in our organization and the many things we accomplish!

**Next Issue: Friends of 708!**

*Shannon Wheatley,*

Lecturing Knight &

Chair, Tampa Elks House Committee

*Elks* Care - *Elks* Share

# PROUD TO BE AN ELK!

**Chris Miles is inviting you to a scheduled Zoom meeting.**

We only have one meeting in May (5/13) per our bylaws  
If anyone has questions please let me know.

**Miles**  
**813-495-2308**

Topic: Lodge Meeting  
Time: May 13, 2020 07:30 PM Eastern Time (US and Canada)  
Join Zoom Meeting

[https://us02web.zoom.us/j/81863605625?  
pwd=d2xzWWpiQldZNXJsak10eWt2Y2FKdz09](https://us02web.zoom.us/j/81863605625?pwd=d2xzWWpiQldZNXJsak10eWt2Y2FKdz09)

**Meeting ID: 818 6360 5625**  
**Password: TampaElks**

One tap mobile (Phone, not video)  
+16465588656,,81863605625#,,#,782944# US (New York)  
+13126266799,,81863605625#,,#,782944# US (Chicago)

## A message from your House Committee:

The start of the year has been a trying time for many. Our lodge is normally bustling with members and activities, music and laughter. While we sincerely hope everyone is healthy and safe, we are looking forward to re-opening and showing our Elk spirit when the time is right!

Your House Committee has been planning a grand re-opening event however not immediately when we re-open, but when we can as safely as possible have the bulk of our members in attendance. It's likely that even when we are given the okay to open our doors that we will still have to maintain social distancing guidelines so we feel to plan anything too soon would not be smart. We will keep you up to date with emails and Facebook when we have a date for the "Grand Re-Opening!"

We look forward to a time of fellowship and catching-up with all of you and we are ready to work cohesively with the other committees of the lodge to ensure that your time at the lodge is well spent.

If you have any questions, please feel free to reach out to a member of our team. We are happy to assist.

Your House Committee

Shannon Wheatley, Wendy Hall, Paul Deland, Candy Venable, Sue Moore, Jacquie LoCicero, Tommy Moore

**House Committee Chair, Shannon Wheatley, can be reached at:**

**[Shannon.Wheatley1@gmail.com](mailto:Shannon.Wheatley1@gmail.com) or 727-772-3446**

**Elks Care - Elks Share**

# Toiletries Bags for The Homeless!

Using the Beacon Grant, and items provided by the sponsors at left, a group of Lodge members and non-Elk volunteers assembled 200 gift bags for the homeless and then distributed them through the monthly breakfast for the homeless.



Some of the items in each bag are shown at the left. The right picture shows the row upon row of bags filled and ready for delivery.



The pictures above show the process of assembling the contents and filling the bags... About ten people, Elks and non-Elks were involved in completion of the bags. Nearly 200 have been handed out to those in need.

**Elks Care - Elks Share**

# On-Going Calendar



**Monday**  
**LET'S GET SOCIAL!**  
 We hope soon!

**MOVIE NIGHT**

Soon!!!  
 We are eager  
 To resume!



## Lodge Business and Programs



# Partners in Progress or PIP

### Platinum Investors \$100+

- Fennell, Jerrye & Patrick 7/20
- Fennell, Pat & Marilyn 7/20
- Appel, Jackie 7/21
- Palladini, Frank 2/21
- Schneider, R & J 2/21
- Suhrheinrich, Bob & Candace 1/21
- Miller, Scott & Beth 10/20
- Florance, Richard 11/2021
- Waldbart, Mark 8/23
- Bertoch, Melissa 2/21
- Atwood, Bonnie 2/21
- Smith, R 2/21
- Miles, ER, Chris 2/21
- Jones, Laura 2/21
- Brennen, J. 3/21

To increase the financial strength of Tampa Elks Lodge #708, ensuring that our Lodge will be around for another 100 years. We will accomplish this by rebuilding our capital through investments made by Lodge Partners who are determined to secure Tampa Elks Lodge #708 future. Interest earned on the investments will remain in the investment account. Our goal is to increase our overall financial strength determined to secure the future of Tampa Elk's 708

### Gold Investors \$51-\$99

- McLaughlin, Susan & Mark 10/20

### Silver Investors \$21-\$50

- Lake, Sandra (Member) 10/20
- Lake, David & Carol 10/20
- Tuttle, Peggy 10/20

### Bronze Investors \$10 - \$20

- Wheatley, Shannon 2/21
- Buikema, Douglas & Carol 10/20
- Piser, Carol 10/20
- Lynn, Camden 2/21

**Elks Care - Elks Share**



EVENTS WILL BE ANNOUNCED  
WHEN WE ARE CLEARED TO  
OPEN. WATCH EMAILS & OUR  
WEBSITE!

# MAY 2020

## All events subject to change

Sunday	Monday	Tuesday	Wednesday	Thursday	Friday	Saturday																																																																																																			
<table border="1"> <tr><th colspan="7">Apr 2020</th></tr> <tr><th>S</th><th>M</th><th>T</th><th>W</th><th>T</th><th>F</th><th>S</th></tr> <tr><td></td><td></td><td>1</td><td>2</td><td>3</td><td>4</td><td></td></tr> <tr><td>5</td><td>6</td><td>7</td><td>8</td><td>9</td><td>10</td><td>11</td></tr> <tr><td>12</td><td>13</td><td>14</td><td>15</td><td>16</td><td>17</td><td>18</td></tr> <tr><td>19</td><td>20</td><td>21</td><td>22</td><td>23</td><td>24</td><td>25</td></tr> <tr><td>26</td><td>27</td><td>28</td><td>29</td><td>30</td><td></td><td></td></tr> </table>		Apr 2020							S	M	T	W	T	F	S			1	2	3	4		5	6	7	8	9	10	11	12	13	14	15	16	17	18	19	20	21	22	23	24	25	26	27	28	29	30			<table border="1"> <tr><th colspan="7">Jun 2020</th></tr> <tr><th>S</th><th>M</th><th>T</th><th>W</th><th>T</th><th>F</th><th>S</th></tr> <tr><td></td><td>1</td><td>2</td><td>3</td><td>4</td><td>5</td><td>6</td></tr> <tr><td>7</td><td>8</td><td>9</td><td>10</td><td>11</td><td>12</td><td>13</td></tr> <tr><td>14</td><td>15</td><td>16</td><td>17</td><td>18</td><td>19</td><td>20</td></tr> <tr><td>21</td><td>22</td><td>23</td><td>24</td><td>25</td><td>26</td><td>27</td></tr> <tr><td>28</td><td>29</td><td>30</td><td></td><td></td><td></td><td></td></tr> </table>		Jun 2020							S	M	T	W	T	F	S		1	2	3	4	5	6	7	8	9	10	11	12	13	14	15	16	17	18	19	20	21	22	23	24	25	26	27	28	29	30					1	2	UNTIL FURTHER	
Apr 2020																																																																																																									
S	M	T	W	T	F	S																																																																																																			
		1	2	3	4																																																																																																				
5	6	7	8	9	10	11																																																																																																			
12	13	14	15	16	17	18																																																																																																			
19	20	21	22	23	24	25																																																																																																			
26	27	28	29	30																																																																																																					
Jun 2020																																																																																																									
S	M	T	W	T	F	S																																																																																																			
	1	2	3	4	5	6																																																																																																			
7	8	9	10	11	12	13																																																																																																			
14	15	16	17	18	19	20																																																																																																			
21	22	23	24	25	26	27																																																																																																			
28	29	30																																																																																																							
3	4	5	6	7	LODGE CLOSED UNTIL FURTHER																																																																																																				
10	11	12	13	15	16	LODGE NOTICE!																																																																																																			
17	18	19	21	22	23	LODGE CLOSED UNTIL FURTHER NOTICE!																																																																																																			
24	25	27	28	29	30	LODGE CLOSED UNTIL FURTHER NOTICE!																																																																																																			
31	LODGE																																																																																																								

**TEMPORARILY CLOSED!**

# Elks Tampa 708 size

3616 Gandy Blvd.  
Tampa, FL 33611

NON-PROFIT  
ORGANIZATION  
U.S. POSTAGE  
PAID  
TAMPA, FL  
PERMIT #32



Like us on Facebook to  
receive updates and late  
breaking news.  
Tampa Elks Lodge #708



Please remember to send  
any change of address to:  
[lodge708secretary@outlook.com](mailto:lodge708secretary@outlook.com)

In Memory of Tom Stanton - 9/2018  
Rebecca Sullins - 2/2019  
Debbie Osterbrock - 4/2019  
Donna Halsey - 6/2019  
Jerry & Patrick Fennell 6/2019  
Robert Bordonaro 7/2019  
Mrs. Helen Stanton,  
Bonnie Atwood - 9/2019  
Brenda Stokking and Bob Norton 11/2019  
Suhrheinrich, Bob & Candi 4/20



Bill Deen - 6/2020  
Deborah Cassels 6/2020  
Berni Turpin,  
In Memory of Robert Connor 7/2020  
Bud Cash 11/2020  
In memory of  
John F. Morris - 3/2021  
South Tampa Chamber of Commerce  
2/2023  
Vera Wright -  
In Memory of Harold Wright 6/2023

Support the Elksize

Be an SOB - Smiling 'Ole' Booster

\$10.00 a year helps to defer the cost of our publication and allows  
us to direct more of our annual income to the charities and organizations we support.  
Thank you!

## Friends of 708

### **OUR CURRENT SUSTAINING SUPPORTERS**

**Marty Quire Bonnie Quire Linda Reid Theresa Matthews Bonnie Atwood  
Nanette Quire Mr & Mrs Orcutt Sharon Ford Richard Schneider Jacquie LoCicero  
Christopher Miles Mr & Mrs Suhrheinrich Susie Harlow Steve Harmon  
Lisa and Bob Snyder Pat Fennell Bill Deen Candy Venable Chris Ragusa  
Mr & Mrs Hilficker Shannon Wheatley Camden Lynn Laura Jones LOE 708**

### **OUR CURRENT ONE-TIME SUPPORTERS**

**H. Smith S. Washington R. Florance S. Owens S. Wheatley K. Higgins  
L. Snyder J. Megular M. Flowers J. Slater E. Clark R. Reiselt L. Jones  
V. Bihoral A. DeQuesada F. Williams E. Smith B. Atwood J. Wooley  
V. Thomas P & M Volpe**

This local program focuses solely on improving our lodge through generous member donations.  
**All members are encouraged to sign up for the "Eleventh Hour Pledge".** Your recurring  
pledge of \$11 a month will help maintain our lodge.