



Tampa Florida

Official Publication of Tampa Elks Lodge #708 B.P.O.E.

Tampa Elks Lodge #708

Founded 1902

Published Monthly at:
3616 West Gandy Blvd.
Tampa, FL 33611

Lodge Phone

Office 813-831-4280
Lounge 813-839-8928

Lodge email & web:

Lodge708secretary@yahoo.com
Tampaelks.com

Office Hours

12:00 till 5:00P.M. Mon-Tue-Thur.
2:00 till 6:00pm Wed.

Lounge Hours

4:00P.M. till Closing-Mon thru Sat
1:00P.M. till 9:00P.M. Sun

Note- if Five or fewer people are present the lodge will close—one hour early.—

Upcoming Events

Mark your calendars for these upcoming events!



<i>LOE MEETING</i>	<i>WEDNESDAY</i>	<i>JUNE 5TH 7:30 PM</i>
<i>BUSINESS MEETING</i>	<i>WEDNESDAY</i>	<i>JUNE 12TH 7:30 PM</i>
<i>TRIVIA NIGHT (SUPPORTS VETERANS)</i>	<i>THURSDAY</i>	<i>JUNE 20TH 7:00 PM</i>
<i>TAMPA ELKS SUMMER PICNIC</i>	<i>SATURDAY</i>	<i>JUNE 22ND 11A-3P</i>
<i>SUPPER CLUB</i>	<i>SUNDAY</i>	<i>JUNE 23RD 5:00 PM</i>
<i>BUSINESS MEETING</i>	<i>WEDNESDAY</i>	<i>JUNE 26TH 7:30PM</i>
<i>LOUD AND PROUD EVENT</i>	<i>THURSDAY</i>	<i>JUNE 27TH 7:00PM</i>
<i>VETERANS DINNER</i>	<i>FRIDAY</i>	<i>JUNE 28TH 6:00 PM</i>
<i>LIVE ENTERTAINMENT AND FULL DINNER MENU</i>		<i>EACH FRIDAY NIGHT</i>
<i>BREAKFAST (FULL MENU!)</i>		<i>EVERY SUNDAY 8:30 A.M. TILL NOON</i>
<i>FEED HOMELESS AT HYDE PARK</i>		<i>EVERY SUNDAY 7:30 A.M. TIL 9:30AM</i>
		<i>-and, of course-</i>
Bingo Every Monday Night		6:30 PM till 10:00 PM

**Assistance for any of the events is ALWAYS appreciated.
Contact any committee Chairman or Lodge officer if interested.**



Convention 2013

**MUCH MORE INSIDE
THIS ISSUE!**



EXALTED RULER ADDRESS | Pat Boyd, ER



ER
Arrrgggghh!

My fellow Elks, welcome to June. April and May have come and gone, presenting us with some unique prospects for cooperation. We hope you have had fun along the way. We tried to provide you (our members) with ample opportunities to enjoy. The best part is that “we’ve only just begun!” Whether your taste is in food, music, cards, trivia, etc., or in serving those less fortunate, sprucing up the lodge, or helping with ‘Hall Donations,’ there have been avenues for you to get involved while having some FUN. Of course, some of us have more FUN than others!

When I was elected the office of Exalted Ruler, I decided to lead by example. I have not asked anyone to do or give when I did not do or give myself. This attitude takes its toll unless, in the spirit of Brotherhood, we all lend a hand. Many, by choice, have jumped in, with both feet, along side me. This is greatly appreciated and personally gratifying. Now I am asking all our Elks, to come forward, leave any preconceptions behind, and help to make OUR lodge the envy of the Elks!

Throughout this newsletter, you will find a list of near future needs of the lodge. Your investment of just an hour or two per week will make the difference.

If you have time during the day, we need you!

If you have organizational skills, we need you!

If you can make phone calls to fellow members, we need you.

Through volunteering, you might find we help you!!! I will continue to put forth my best effort to improve OUR lodge and I ask that each of you react in kind. Your reward will be a lodge in which we can assume collective PRIDE! We each have gifts! Take the next step!

Contact any lodge officer or myself and ask where YOUR gift can be applied within OUR lodge! Individual responsibility makes one life better. Through the teamwork of Elkdom, we make the community better! Let us focus, now, on the BIG PICTURE!

Fun and Focus for the Future of Elks!

Bingo Help Needed!

In case you don't know, we are forming new bingo teams so no one has to volunteer every week. The team that had been doing bingo for several years are getting a well deserved break. Needless to say, running Monday night bingo has been a major learning curve for members and officers alike. I want to thank everyone who has pitched in during this process. Working bingo can be challenging; nevertheless, I am asking for you, my fellow Elks, to step up and assist. We need two or three teams (seven people max) to switch off and give your fellow Elks a break. With that in mind, We are ready to start training these teams to assist in this, our lodge's most productive and charitable financial arm. All Bingo funds get distributed to charities. Bingo has allowed Tampa Elks to contribute more than \$2,000.00 a year to public causes. Monies raised through bingo, allows us to reach out into the community more effectively.

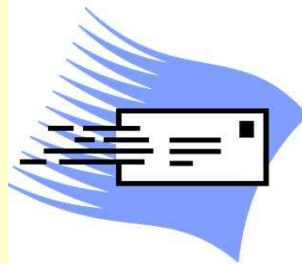
Watch your Calendar and email for the Bingo training sessions coming your way. In the meantime, we ask you to come by the lodge on Mondays (between 5:30 and 10:00 PM and try the myriad of volunteer jobs available. **Every hour or two you commit can send a child to camp, support a veteran, or assist someone or some group in need.** There is no better way to build friendships and help the community!

We will be scheduling a Bingo day so you can learn the process and, hopefully, form a team so NO ONE gets burned out!

NOTE: See the list of people needed and training notice elsewhere in this issue!

**Stay in touch with the Lodge even if you
can't be there!**

*E-mail your questions, comments, and
suggestions to the Office.*



Pat Boyd | Exalted Ruler
fpboyd@futurestreamsinc.com
Tracy Horrell | Secretary
trahorrell@tampabay.rr.com
Cindy Green | Treasurer
Treasurer708@gmail.com



DON'T STOP NOW Turn to the next Page>>



LODGE OFFICERS

Exalted Ruler
Pat Boyd
Leading Knight
Richard Florance
Loyal Knight
Albert Schnut
Lecturing Knight
Mark McDonough
Tiler
Courtney Taylor
Esquire
Vic Thomas, PER
Secretary
Tracy Horrell, PER, PLP
Treasurer
Cindy Green
Inner Guard
Christine Harris
Chaplain
Melissa Bertoch

BOARD OF TRUSTEES

5-Year
Bobby Green
4-Year
Brian Brantley, PER
3-Year
Addison Horrell
2-Year
Jackie Appel
1-Year
Sharon Ford

LADIES OF THE ELKS

President
Sue Moore
Vice President
Sarah Ferguson
Secretary
Alma Kelly
Treasurer
Donna Halsey
Parliamentarian
Susie Harlow, PLP
Chaplain
Bonnie Atwood

LODGE COMMITTEES

Auditing and Accounting

Nancy Sleeper

Community Activities

Addison Horrell

Lodge Activities

Pat Boyd, ER (Chairperson Needed!)

Elks National Foundation

Albert Schnut

Harry Anna Foundation

Richard Florance

Membership

Cindy Green

Bingo

Pat Boyd, ER (Chairperson Needed)

Americanism

Richard Florance

Athena House

Rita Smith

Public Relations

Connie Blaney

Website/Email Notices

Marty Quire

Convention

DINNER CLUB



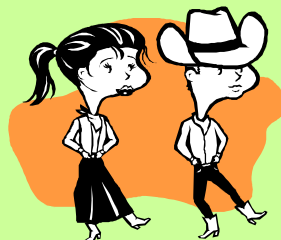
In June, the Dinner Club will meet on the 4th Sunday (6/23/13) instead of the 3rd Sunday - which is Father's Day. This month, we have a big challenge for you: we want dishes that reflect our Organization

- the Benevolent Protective Order of Elks. Therefore, we're looking for foods that are prepared with (but not limited to) ingredients beginning with B,P,O,and E. For example: **B**utter, **P**ecans, **O**atmeal and **E**ggs could be the start of Oatmeal Cookies. **B**acon, **P**ie crust, **O**nion and **E**ggs get us halfway to a Quiche Lorraine. You get the idea! Join us at 5:00 on June 23rd with a dish or a donation. For a list of BPOE ingredient ideas, email Candy at: chodgson2@verizon.net.

We have a Salsa Dancing Lesson night!

If you are interested in expanding - We have someone who will teach: **Line Dancing**
Contact Debbie Osterbrock at
813-389-3272 or
majorbluebeach@yahoo.com
by June 15th.

We will let you know the schedule.



HOUSE COMMITTEE MEMBERS

William T. Edwards, PER, PLP, Chairman
Bobby Green
Sandy Mayo
Mark McDonough
Lesley Nikkinen, PLP
Carl Williamson, PER
Glenn Harris

Paul DeLand,

Editor

Sez: Deadline for all articles is the 15th of the month.

Mail to: dukeofdeland@

Hotmail.com

Be on-time

PLEASE!

LOE PRESIDENTS REPORT

It's already the start of a new month. The meeting started with three visitors that are joining the LOE and will be installed in our June meeting. This is exciting for us. It's a joy to my heart to see our LOE family growing. Keep showing yourself in the lodge functions and sharing good thoughts to all you see.

"Remember an extended hand brings friendship and brotherhood to us all."

I'd like to say Happy Mother's Day to all the mothers in our lodge, our families and around the world.

Elks convention was held May 24-26th and we had two (2) baskets to raffle. One "ladies pampering basket". The second one is a "grill masters basket". Also, over \$100 in our scratch off board. It's was already paid for. Thanks for all who helped make this a huge success for the LOE of Tampa Lodge #708

I leave you with this: Take time out with your family and time with the family of this lodge and your reward will bring peace to your heart.



**God Bless,
Suzanne Moore, President**

365 Club – Rita Smith

Florida Elks Children's Therapy Services was started on March 1, 1999. The Elks have 23 mobile units serving the 67 counties in Florida, offering both occupational and physical therapy service to eligible children in their homes.

Each therapist travels thousand of miles a month and these vans must be maintained and replaced as necessary. It is the goal of the Florida Ladies of the Elks to replace at least one van each year.

The theory is that if each Elk family gave a penny a day, **365** days a year, we could meet that goal! Please empty your pockets of change when you see those little houses in the Lodge!

From April 15th to May 15th I received filled houses from Aida Diaz, Alex Martinez, Shelagh Gombarcik, Bernie Turpin, Bonnie Atwood, Bonnie Quire, Susan Hagan, Debbie Osterbrock gave 2 houses, and Sue Mason gets credit for 3 more houses. There were some generous but anonymous donations from the house scattered throughout the Lodge also.

As determined at the May LOE meeting, the Tampa LOE is running a contest for the most houses turned in by the August meeting. A five dollar bill gives you credit for one house. April's donations total was \$115.97. Thanks for every penny!



HELLO?...CALLING ALL NEW MEMBERS OF TAMPA LODGE #708!!!

One of the biggest things you, as a new member, can do for your Lodge is to support the activities of the Lodge.

These events and activities are the means of producing the income stream which allows us to support our charitable works.

Helping stage a Hall Event; Cooking for a Friday or Sunday meal; helping fold, staple and mail this publication; Working in a position for our Monday night BINGO...

These are fun, as long as we have the help...more importantly, this is where you meet and get to know fellow members and become an active part of our efforts to help youth and veterans....

INTERESTED??? Contact any officer and ask about involvement! You'll feel



DON'T STOP NOW Turn to the next Page>>





**Elk(s) of the Month
JOHN & FLO WAYNE**

This month I want to mention a PAIR who have made my life much easier. You can see them at the lodge all the time. Every Friday they are helping raise monies for Youth Camp and Drug Awareness through the dessert table. Almost every night we have food they are helping as cashiers. This past month they have been instrumental in the training us newbees and working till the end on Monday Night Bingo. Without their efforts the lodge would be sorely lacking in key areas. Of course, they are a team that is always willing to step up. Flo is our official Greater as well and John fills in when officers cannot attend a meeting or function. When you see them at the lodge, be sure to say thanks for their tireless effort at making OUR lodge the best! Thank you John and Flo Wayne for proving daily that Elks care, Elks Share!

**Elk Officer of the Month
RICHARD FLORANCE**

Whether it is helping with a paint brush, Bingo, or hanging curtains on Friday nights Richard Florance has been there supporting our lodge. He does what needs to be done; sometimes, when no one else steps up! He shares his ideas as well as his time. He knows the image Elks need to put forth and does so with an open mind and open heart. Our Leading Knight proves daily, that one person does make a difference. He has attended every function, is on a kitchen team, is active with our lodge Flag Display and is the lodge and District Americanism chairman He is always available during the day to assist at the lodge when called upon. Join with me in honoring him as June Officer of the Month. Thank you Richard for your invaluable assistance in making our lodge more complete!

FaceBook Information

To POST an event Contact:
Mark McDonough at
813-410-4763 or via email:
mark@ioholistics.com
for instructions or comments!!!

New Tampa Elk Candidates

Name	Occupation	Location	Proposer	Balloting Date
Sandra Crookes Gaillard	Housewife	Tampa, FL	Howard James	6/12/2013
John Deese	Plastering Contractor	St. Pete, FL	Robert Suhrheinrich	6/12/2013

New Tampa #708 Elks



David Mills



Mary Christie



Debbie Osterbrock



Shirley Higgins



Justin Smith



DON'T STOP NOW Turn to the next Page>>



Mission of the Partners In Progress

To increase the financial strength of Tampa Elks Lodge #708, ensuring that our Lodge will be around for another 100 years. We will accomplish this by rebuilding our capital through investments made by Lodge Partners who are determined to secure Tampa Elks Lodge #708's long term future. Interest earned on the investments will remain in the investment account and help to increase the overall financial strength of our Lodge.

GOLD INVESTORS \$51 - \$99
 Horrell, Addison and Tracy 3/2014
 Wayne, John and Flo 3/2014
 LaChance, Roger and Rosemary 3/2014

SILVER INVESTORS \$21 - \$50
 Elma Kelly 3/2014
 Jan Simpson & Charles Rice 5/2014

BRONZE INVESTORS \$10-\$20
 Edwards, Bill 3/2014
 McDonough, Mark 3/2014
 Swaney, Valorne 3/2014

PLATINUM INVESTORS - \$100
 Fennell, Pat & Marilyn 3/2014
 In Memory of Fennell, Jerrye and Patrick 3/2014
 Florance, Richard 3/2014
 Appel, Jackie 3/2014
 Palladini, PSP, Frank & Ebba Jean 6/2015
 Quire, Bonnie (In memory, Larry Quire) 3/2014
 Snyder, Robert & Lisa 5/2013
 Marino, Anthony 3/2014
 Wright, Vera 3/2015
 In Memory Ina Moore 3/2014
 DeLand, Paul & Sandra 3/2014
 Green, Cindy and Bob 3/2014
 Smith, Rita 3/2014
 Nikkinen, Leslie 3/2014
 Palladini, Debbie & Durant, Rose 3/2016
 Pickenpaugh, Vernon and Betty, PLSP 3/2014
 Reinhardt. Jeannie 3/2014

A Monday night Bingo team consists of the following:
Bingo Caller (1 each minimum)
Hours - (6:30 till Completed (usually 10:30 PM)
 Pulls and Calls number
Hall Callers – 2 each (minimum)
Hours - (6:30 till Completed (usually 10:30 PM)
 Calls back verification numbers
Card sales and order taker – 1 each minimum
Hours - (5:30 till 8:00PM)
 Verify the customer orders are completed correctly.
Order Fillers - 2 each (minimum)
Hours - (5:30 till 8:30)
 Hands ordered Bingo sheet to customers
Cashier - *Hours - (5:30 till 10:30)*
 Team coordinator, Bank monitor, Winnings payout, and completes paperwork for Lodge Charities Book.
Kitchen Sales and Service - 3 each (minimum) *Hours - (5:00 till 7:00)*

Be an Elksize Booster!

\$10.00 per year helps offset the cost of the Elksize.
 Boyd, Pat 05/2013
 Fennell, Pat & Marilyn 6/2014
 In Memory of Charlie Fiveash 5/2015
 In Memory of Harold Siddens, Linda & Richard 3/2018
 Wright, Vera 3/2018
 Donna Halsey 4/2013
 Jan Simpson & Charles Rice 5/2013

No Heavy Lifting Required: Come join us and have some FUN!

NEW MEMBERS WELCOME!!!

DON'T STOP NOW Turn to the next Page>>





SAVE THE DATE!

Please join the Elks and the LOE for our
**FATHER'S DAY AND
 FLAG DAY CELEBRATION!**

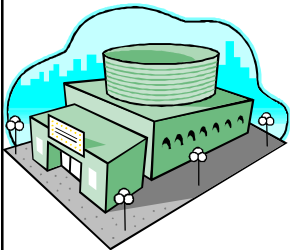


WHEN: June 16, 2013 TIME: 2-6pm

*Fathers will receive a FREE meal and have a chance to win door prizes!
 Please bring the entire family for this wonderful ceremony and a delicious meal.*

ANNOUNCEMENTS!

Grand Lodge Convention



The 2013 Grand Lodge Convention will be held in Reno, Nevada July 14-18, 2013. The Florida delegation hotel is the Peppermill Resort Spa Casino located at 2707 South Virginia Street, Reno, NV 89502. All attendees are responsible for making their own travel arrangements. Hotel reservations for the Peppermill Resort Spa Casino must be made directly with the hotel. You may do this by phone or online at the FSEA website, www.floridaelks.org. The room rate is \$123.72 per night (includes taxes). For Reservations by phone call (866) 821-9996 and mention Group Code ELK13FL. The cutoff date for reservations is June 13, 2013 or when our 190 rooms are sold out.

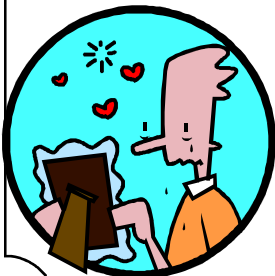
Day with the Rays



Come out on Sunday, August 18 and support the 6th annual Florida Elks Fundraiser and watch the Rays triumph over the Toronto Blue Jays. Baseline box tickets are \$28 (\$37 value). The deadline to purchase is Wednesday, August 7th. A portion of every ticket sold will benefit the Harry-Anna Trust Fund. This exclusive offer includes a Florida Elks personalized Rays tote bag. Participating Lodges that purchase 20 or more tickets will be enrolled in the Rays Group Leader Rewards program. For questions please contact your Harry-Anna Chairman or Rick

Jacobs at 727-430-1584 or at cejemj@aol.com.

Sickness and Bereavement



The Florida State Elks website has a new feature for our Lodge to recognize those Members who are suffering from an illness or their untimely passing. You may submit the Member's information by logging on to the website at: www.floridaelks.org and choosing the Member Resources page. Once there, just click on Sickness and Bereavement and it will take you to the submission form.

Paws for Patriots!



At left, Secretary Tracy Horrell, PER, presents a check for \$1,500 to Mike Jernigan of Paws For Patriots as Mike's guide dog Brittani sits patiently by. The Elks National Foundation grant was part of a total grant issued to Tampa Lodge #708 to both assist Paws For Patriots parent organization, Southeast Guide Dogs, Inc. and to provide funds to allow Tampa Lodge to expand the community recognition and awareness of the guide dog program for Veterans. The check was presented by a team of six Elks from the Lodge who toured the facility to see the guide dogs and become more familiar with the operation of the organization. The second phase of the grant program will be held July 27th when Tampa Lodge hosts other community organizations in the awareness program with Mike Jernigan as our principal speaker.

→ The Tampa Elks meet "Blue", a 12-week-old Lab puppy who will soon be available for a family to raise through his critical first 12-18 months.



The collective "AWwwwww" from our group as we met these days-old lab pups was most enjoyable. The little tykes are doing what pups do... eat, sleep, potty, eat, sleep, pottywell, you get the idea! Below the pic is of 8 week old pups, black labs!



Here we are at "Puppy University" where dogs just back from their stay with a family begin as Freshmen and are ready for their companion/partner upon completion of their Senior time period. These dogs are usually ready for their match with a partner about age 18 months. Your ENF dollars hard at work....



DON'T STOP NOW Turn to the next Page>>



Visit these web links for ELK information and events!

Grand Lodge

www.elks.org

Florida State Elks Association www.floridaelks.org

Florida State Elks Online Community Forum

www.talkoftheelks.org

Tampa Elks Lodge #708

www.tampaelks.com

Tampa Elks Facebook

www.facebook.com/#!/ElksLodge708



Americanism

Richard Florance
Americanism Chairman



AMERICA'S INIMITABLE SPIRIT

As Americans and American Elks we must first know what the adjective definition of the word "inimitable" means - which is: not being capable of being imitated! This one powerful word continues to echo all around America and the world as the epitome of America's heart and soul -- and ultimately to the spirit of America's people - We Can Do!!

On the back's, belief's, mistakes and successes of our American people - and with God's blessings of America's natural resources combined with the collective spirit and positive will to succeed in all endeavors - America will continue to find the resiliency borne of We Can Do! The bed-rock beliefs of Conservative values through private industry and cooperation from public and private technological resources will continue to be a most valuable asset to the continuance of America's - We Can Do - attitudes and ideas.

As Elks lodge members we are being urged by our national, state, and local leaders and find where the greatest needs are and develop positive relationships that will do the most good for those who can benefit from our Elks Charities and at the same time put our Elks further into the mainstream of "community involvement" that can "pay forward" Elks values of Charity, Justice, Brotherly Love, and Fidelity that proves to all who benefit that "Elks Care and Elks Share".

Be ever-mindful that charity can also bring a renewed interest in Elkdom and with it a revived sense of usefulness and vigor to the B.P.O. Elks and ensure the "Fun and Focus for the future of Elks".

During this month join us in the lodge as we celebrate Flag Day, Thursday, June 13th and Father's Day, Sunday, June 16th in remembrance of honoring the emblem of our nation's unity for all, and the love, honor and respect we so graciously give each father, all veterans, all children, all families, all communities, and all leaders of our United States of America every day.

Richard H. Florance, Americanism Chairman

(813) 831-0518



DON'T STOP NOW Turn to the next Page>>



Lounge News

"Peggi"

"Courtney"

"Sam"

Welcome to summer! Baseball is in full swing and we have every Rays game playing on at least 2 of our big screen TVs for your convenience. Come on down and enjoy the drink of the month specials while watching the games.

The month of June the lounge is featuring Pinnacle Whipped Vodka.... Think of the possibilities, Creamsicles, Melonsicles, Peachesicles, Strawberry-sicles, Sourapplesicles.

You get the point...these drinks are cold and refreshing.

Don't forget, everyone is invited to tease their brain on the 3rd Thursday of every month with TRIVIA (7:00 p.m.).

You are all also encouraged to come try the Supper Club/Dining Club on the 3rd Sunday of every month (5:00 p.m.). Some of the best dishes come through every month.



Tampa Elk's #708 FIRST Texas Hold'em Tournament

What a fantastic, fun, friendly night had by all playing Texas Hold'em.

Thanks to the combined efforts of Tampa 708 Elk's and the Tampa LOE we have raised \$230.00 to go towards our convention hospitality room food and drink.



Special thanks to Paul DeLand, Robert Summers, Mike Manley, and myself for contributing to the food and prizes.

Special thanks to our LOE members Elma Kelly (hors d'oeuvres) and Sarah Ferguson (dealer).
Special thanks to our Elk's dealers Mark McDonough and Mike Manley.

Most of all, THANKS TO ALL WHO PARTICIPATED AS PLAYERS WITHOUT ANY OF YOU THIS WOULD'NT HAVE BEEN SUCH A GREAT SUCCESS.

Tampa Elk's 708 Texas Hold'em Tournament winners were:

- 1st Place-Glen Harris**
- 2nd Place-Wendy Hall**
- 3rd Place-Richard Florance**
- 4th Place-ER Pat Boyd**



STATE PRESIDENT'S PLANNING MEETINGS

Golf Tournament Fundraiser State President Visit - Lake Seminole Country Club - June 15

State President Planning Meeting - St Pete - June 23

State President Planning Meeting - St Pete - July 28

Mystery Dinner Luncheon Theatre Fundraiser State President Visit - St. Pete - Aug 8

Reverse Raffle Drawing for Winners Fund-raiser State President Visit - St Pete - Aug 9

Final State President Planning Meeting - St Pete - Aug 11

WCD PER Association Meeting includes visit from State President - Holiday Isles - Aug 16

State President Visit to WCD - Aug 16-18

Thanks, Tammy Manley, Chairperson

DON'T STOP NOW Turn to the next Page>>

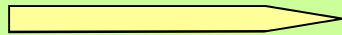


Hall Event-From Empty to Ready!

TAMPA LODGE HOSTS MANY EVENTS EACH YEAR...HERE IS ONE AS IT HAPPENED.



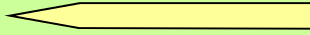
TAKE ONE EMPTY HALL, AND ADD 14 TABLES, PLUS MORE THAN 100 CHAIRS.....



THE MANAGERS SET THE LAYOUT OF THE TABLES, CHAIRS, AND SPECIAL TABLES.....



Row upon row of chairs are sheathed in chair covers as they await the final chair decoration..... The beautiful bows show at left....



Above Left to Right—Chair Bows tied, and napkins folded; cake table set and in place; and, Caterer arrives with food. THEN: At right...**THE WEDDING HALL IS COMPLETE AND THE BRIDE, GROOM AND PARTY CAN CELEBRATE IN A BEAUTIFUL SETTING!**

If you would like to be part of this team, call:
Wendy Hall—813-500-9433
Paul DeLand—813-376-5401



DON'T STOP NOW Turn to the next Page>>



2013 Visitation schedule



Benevolent and Protective Order of Elks of the United States of America
A Fraternal Organization

Rudolph J. "Rudy" Masi, Sr., Vice President
West Central District

7821 3rd Avenue South – St. Petersburg, FL 33707
(727) 347-6263 (c) * (727) 410-2059 (h) * mid19@aol.com

WCD 2013 Visitation Dates

- July 27, Saturday, Meeting 7:00PM at New Port Richey #2284
- August 3, Saturday, Meeting 7:00PM at Seminole #2519
- August 10, Saturday, Meeting 7:00PM at Largo #2159
- August 16-18, State President Visitation to WCD
- August 24, Saturday, Meeting 7:00PM at Tarpon Springs #1719
- August 31, OPEN – Labor Day Holiday Weekend
- September 7, Saturday, Meeting 7:00PM at Holiday Isles #1912
- September 14, Saturday, Meeting 7:00PM at Tampa #708
- September 28, Saturday, Meeting 7:00PM at Pinellas Park #2217
- October 5, USO Fundraiser for Bay Pines VA @ St. Petersburg #1224
- October 12, Saturday, Meeting 7:00PM at St. Petersburg #1224, VP Homecoming
- October 26, Saturday, Meeting 7:00PM at Dunedin-Clearwater #1525, DD Homecoming

Important Dates

- July 14-18, BPOE National Convention
- August 18, Elks Day at the Rays
- September 20-21, FLOE Convention
- November 7-9, FSEA Mid-Year Convention
- December 13, Elks Memorial Service

Elk's 1st Annual Summer Picnic

Join us for Burgers & Dogs grilled on the beach!

Pack some sunscreen, a drink and something yummy to share

Saturday June 22, 11 am

Shelter 602 Picnic Island

Please sign up

Get on the Green!



WCD Fundraising Golf Tournament
All PROCEEDS go to the Florida Elks State President Visit to West Central District

Saturday, June 15
Seminole Lake Country Club
6100 Augusta Blvd., Seminole Florida

\$65PP price includes: 18 holes of golf, cart, prizes and steak dinner at St. Pete #1224

Registration Starting at 11:00am
Payment Via Cash or Check
Tee-off 1:00pm ● 4 Person Shot Gun Start
Chance to Win Various Prizes ● Par 3 Poker with 50/50 Split
Sign Up Sheets at Seminole #2519
Golf Attire is Required, Collared Shirts

Please join us in this fun event and help us raise much needed funds.
For further information contact St. Petersburg Lodge #1224 at 344-6551.

Elk's 1st Annual Summer Picnic
Day at the Beach List
We will have water, burgers and dogs

Who & Suggestions	Who & What	TO BRING:
Potato Salad	BPOE - Hot Dogs	Chairs
Macaroni Salad	BPOE - Burgers	Blank
Macaroni Salad	BPOE - Water	Towels
Chips	BPOE - Condiments	Sunscreen
Chips		Umbrella
Soda		
Soda		
Salsa		
Cheese		

Shelter 602 Picnic Island
Saturday June 22, 2013

SIGN-UP ON THE LODGE BULLETIN BOARD



DON'T STOP NOW Turn to the next Page>>



Coronado Springs Resort

2013-2014 Lodge Year

Convention 2013

There were meetings, booths, and then the F-U-N!



The Krewe of the Jolly Corks Invaded



We drew for a week at the beach, \$300 cash, and 70 prizes in "Pop-It &-Win!"Plus more.....



There were wenches everywhere.....many with beads and pirate gear.....some served drinks, some served food, and some.....well, it was a fun time for all.....



The Exalted Ruler even offered a salute to his mighty Krewe....



MEMBERSHIP: Greetings! I just got back a few days ago from the Florida State Elks convention in Orlando, held at one of the Disney Resorts. The convention is always a nice place to go with many things to see and participate in. Of course the Disney grounds are beautiful with their pools, parks and meeting rooms. There are raffles, food and drink in all the hospitality rooms, while getting to meet people from all over the state. If you have never gone to convention, I suggest everyone go and experience it at least once. You won't regret it.

So what does this have to do with membership? Well, being one of the Membership Liaisons, I am required to attend a very nice breakfast meeting at the convention. Now that I am in my 2nd year doing this I understand it more. There are many facets of membership. First is recruitment of new members. This is what we hear most about in meetings and attendees give suggestions on how to bring in new people. As we go out into the community participating in activities like the "Open Arms" program and Bowl-A-Rama, or have events in the Lodge such as Relay for Life, we will be seen and heard and therefore hope to attract new members. Engagement of members volunteering is important also. It would be great to see each person give at least 2-3 hours per month. With a membership of over 300, at 3 hours each, we would have more than 900 volunteer hours per month. How great is that! Another thought to consider is new member mentoring. As we give those hours, why not include a newer member? Find your niche and go with it.

The next part of membership tends to be a little more difficult. It's what we call lapsation, when members are delinquent paying their dues. We understand it happens for many reasons but I am happy to report our numbers are way down this year.

The last part of the Liaison meeting concerned Officers and getting the right person elected into a position. I guess this surprised me since I had not heard it addressed before. However, it made perfectly good sense. (cont. on pg. 14)

*Grand Lodge and State
Dates to Remember*

F.S.E.A. State Convention Grand Lodge	May 24-26, 2013	Coronado Resort, Orlando
State President Visit to WCD	July 14-18, 2013	Reno, Nevada
VP/DD Visits in WCD	Aug 16-18, 2013	WCD
	July 27-Oct 26, 2013	(See dates on page 12)

Membership...Cont. from page 13: The officers, in essence, are the managers of the Lodge. How they behave with each other and in the community reflects our principles and core values as Elks. They should be committed, and help other members succeed to their highest potential. We were informed it is better to have a vacant position for a period of time instead of filling it just for the sake of doing so. Last but not least, we were taught to look to our P.E.R.'s (Past Exalted Rulers) for guidance. Look close, there is a wealth of wisdom and knowledge there.

I will close by asking everyone to step up and volunteer for something if not already doing so, or maybe volunteering for something new and different that you haven't tried before. Feel free to contact me via e-mail at Treasurer708@gmail.com with comments or suggestions. Thanks! Cindy Green, Membership Chairperson

WWW.JRTAMPALAW.COM

REDDING & ASSOCIATES, P.A.



<p>ATTORNEY: ALEKSANDRA JAGIELLA</p> <p>MEDIATION & ALTERNATIVE DISPUTE RESOLUTION</p> <p>CIVIL LITIGATION</p>	<p>ATTORNEY: JOHN REDDING</p> <p>PROBATE</p> <p>ESTATE PLANNING</p> <p>WILLS & TRUSTS</p>	<p>TITLE AGENT: JACKIE MURRAY</p> <p>ALL REAL ESTATE MATTERS</p> <p>REAL ESTATE CLOSINGS</p> <p>FULL SERVICE TITLE AGENCY</p>
---	--	--

113 SOUTH MACDILL AVENUE, SUITE A. TAMPA, FL 33606

FAX: 813.871.3299 **813.258.4401** INFO@JRTAMPALAW.COM



DON'T STOP NOW Turn to the next Page>>



June 2013 Calendar of Events

Sunday	Monday	Tuesday	Wednesday	Thursday	Friday	Saturday
<p>2</p> <p>BREAKFAST 8:30-12 NOON HYDE PARK CHURCH 7:30 TO 9am</p>	<p>3</p> <p>BINGO 5-10p</p>	<p>4</p> <p>SALSA LESSONS 6:30-7:30p</p>	<p>5</p> <p>Officers & Bd. Of Dir. Mtg. 6:30pm</p>	<p>6</p>	<p>7</p> <p>FRIDAY MEAL 6:30 to 8:00p</p>	<p>1</p> <p>Birthday Party Alonzo 6-10</p>
<p>9</p> <p>ATTENDANCE 7p-9p BOWL O'RAMA 8p-9p BREAKFAST 8:30-10 AM HYDE PARK CHURCH 7:30 TO 9am</p>	<p>10</p> <p>BINGO 5-10p</p>	<p>11</p> <p>HOUSE COMM. 7p SALSA LESSONS 6:30-7:30p</p>	<p>12</p> <p>LODGE MTG. 7:30PM</p>	<p>13</p>	<p>14</p> <p>FRIDAY MEAL 6:30 to 8:00p</p>	<p>8</p> <p>Birthday Party/Military Joining 6-10p</p>
<p>16</p> <p>BREAKFAST 8:30-12 NOON FIRE DANCE 7p-9p HYDE PARK CHURCH 7:30 TO 9am</p>	<p>17</p> <p>BINGO 5-10p</p>	<p>18</p> <p>SALSA LESSONS 6:30-7:30p</p>	<p>19</p>	<p>20</p> <p>BD. OF DIR. 7p TRIVIA 7p</p>	<p>21</p> <p>FRIDAY MEAL 6:30 to 8:00p</p>	<p>15</p> <p>STATE PRES GOLF FUND RAISER-LAKE SEMINOLE CC</p>
<p>23</p> <p>BREAKFAST 8:30-12 NOON DINNER CLUB 5p HYDE PARK CHURCH 7:30 TO 9am</p>	<p>24</p> <p>BINGO 5-10p</p>	<p>25</p> <p>HOUSE COMM. 7p SALSA LESSONS 6:30-7:30p</p>	<p>26</p> <p>LODGE MTG. 7:30PM</p>	<p>27</p> <p>LOUD & PROUD Courtney Taylor</p>	<p>28</p> <p>FRIDAY MEAL 6:30 to 8:00p</p>	<p>22</p> <p>TAMPA ELKS SUMMER PICNIC 11a-3p</p>
<p>30</p> <p>BREAKFAST 8:30-12 NOON HYDE PARK CHURCH 7:30 TO 9am</p>						<p>29</p> <p>CELEBRATION OF LIFE 12p-3p</p>

Jul 2013

S	M	T	W	T	F	S
1	2	3	4	5	6	
7	8	9	10	11	12	13
14	15	16	17	18	19	20
21	22	23	24	25	26	27
28	29	30	31			

May 2013

S	M	T	W	T	F	S
	6	7	8	9	10	11
12	13	14	15	16	17	18
19	20	21	22	23	24	25
26	27	28	29	30	31	



DON'T STOP NOW Turn to the next Page>>



Tampa Elks Lodge #708 – Founded 1902

Tampa 708 Elksize

Official Publication of Tampa Elks
Lodge # 708 B.P.O.E.
Published monthly at
3616 Gandy Blvd.
Tampa, FL 33611

We're on the Web!
www.tampaelks.com

Lodge Phones:
Office 831-4280
Lounge 839-8928

Lodge email:
lodge708secretary@yahoo.com

**IN
GOD
WE
TRUST**

NON-PROFIT
ORGANIZATION
U.S. POSTAGE
PAID
PERMIT #32
TAMPA, FL



Elksize Advertising Prices

Place your ad in the #708 newsletter
and enjoy our low annual prices....

- Business Card.....\$80**
- 1/4 Page.....\$120**
- 1/2 Page.....\$240**
- Full Page.....\$480**



**For a One-Time Ad
Check with the
office!**

ELKSIZE NOTICE

Articles due by the 15th of each month!

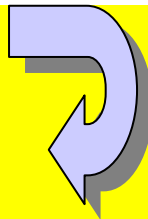
Questions? Comments?

Paul DeLand

Elksize Editor

dukeofdeland@hotmail.com


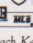
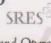
(813) 376-5401



Mary Jo Alford-Roberson
REALTOR®

KELLER WILLIAMS
REALTY

Direct: (813) 486-1345
E-Mail: Malford@kw.com
Website: MjaFloridaHomes.com

 3502 Henderson Blvd. • Ste. 300
 Tampa, FL 33609 

Each Keller Williams Realty Office is Independently Owned and Operated



**"Catering to All Your
Real Estate Needs"**